



THE *Legacy*
COLLECTION

11.24.15

Grand Island, Nebraska - 1 p.m.



The David Spencer family children.

THE *Legacy* COLLECTION

11.24.15
Grand Island, Nebraska
1 p.m.

at the Nebraska State Fairgrounds
Physical Address:
700 East Stolley Park Rd.,
Grand Island, NE 68801

SELLING 66 CATTLE LOTS

Red Angus - SimAngus™ - Simmental
3 Donors - 15 Open Red Angus Heifers
20 Bred Red Angus Heifers
8 Bred Red Angus Cows
11 Open Sim/SimAngus Heifers
9 Bred SimAngus Heifers
Flush - Embryos



It's with great pleasure and pride that we welcome you to "The Legacy Collection," our inaugural production sale. We love agriculture and the beef cattle seedstock business. J6 Farms is a family business and everyone plays a roll in some way in all aspects of the farm.

We have made an exceptional effort to purchase, breed, exhibit and market the very best cattle we can. We are excited about the group of cattle that is presented in this offering and can't wait for your appraisal. This is a strong offering of females and there is something for everyone. As you study the catalog, you see the dedication spent in selecting this offering. They represent longevity, maternal ability and are bred with the cattleman in mind.

We thank the J6 team for their commitment of time and hard work preparing for this sale and the overall success of our program. The team and I are excited for you to join us in Grand Island November 24 to view this tremendous set of females.

We wish to thank the many breeders we have come to know and who have shown interest in our breeding program. It is our hope you can be in attendance for our inaugural "The Legacy Collection" Sale. Let any of us at J6 know how we can assist you with your travel plans or questions on the offering.

Most Sincerely,

David & Tish Spencer
& the J6 Family and Crew



5960 Maple Rd. - Gibbon, NE 68840
David Spencer - 308.627.6259
Charles Spencer - 308.224.4367
Mark Blake - 712.269.1361
Brett Schroeder - 308.627.8422
www.J6Farms.com

SALE SCHEDULE...

MON., NOVEMBER 23, 2015

Cattle will be at the fairgrounds all afternoon

TUES., NOVEMBER 24, 2015

9:00 a.m.....Cattle on Display
NoonLunch
1:00 p.m. Sale

AUCTIONEER...

Jered Shipman: 806.983.7226

RING SERVICE...

Randy Rasby, *Livestock Plus* 308.539.6195
Chris Effling, *Cattle Business Weekly* 605.769.0142
Kent Jaeke, *Special Assignment* 405.408.2440

BID LIVE ONLINE...



www.dvauction.com
For questions, contact: 402.316.5460
or support@dvauction.com
High Speed Internet Required

HOTELS...

HOLIDAY INN
2503 S. Locust Street
Grand Island, NE 68801
308.384.1330

SUPER 8
2603 S. Locust Street
Grand Island, NE 68801
308.384.4380

BEST WESTERN
2707 S. Locust Street
Grand Island, NE 68801
308.381.8855

INSURANCE...

A representative will be on hand for those wishing to insure their purchases.

TRANSPORTATION...

Grand Island is served by the Grand Island Central Nebraska Regional Airport, with direct flights from some major cities.

ANNOUNCEMENTS...

Announcements at the sale by the owners, auctioneer or sale management will take precedence over statements in the sale catalog.

HEALTH...

All female will be accompanied by proper health certificates for shipment and have had a complete vaccination program.

BREEDING GUARANTEE...

All females are guaranteed in accordance with the terms and conditions recommended by the Red Angus Association of America. This guarantee does not cover injury or death. In the event of a problem, the buyer is responsible to return the bull to J-6 Inc. for a suitable replacement, if available, or receive a sale credit for future J-6 Inc. Sales.

TERMS...

Terms of the sale are cash or check, unless prior credit arrangements have been made.

LIABILITY...

All persons who attend the sale do so at their own risk. Neither J-6 Inc. nor the sale manager assume liability, legal or otherwise, for any accidents which may occur.

PHOTOGRAPHY...

Focus Marketing Group - Kent Jaeke

SALE ORDER & SUPPLEMENT INFO...

The sale order and supplemental information will be posted at www.kkseedstock.com for your convenience when available.

SALE CONSULTANTS...

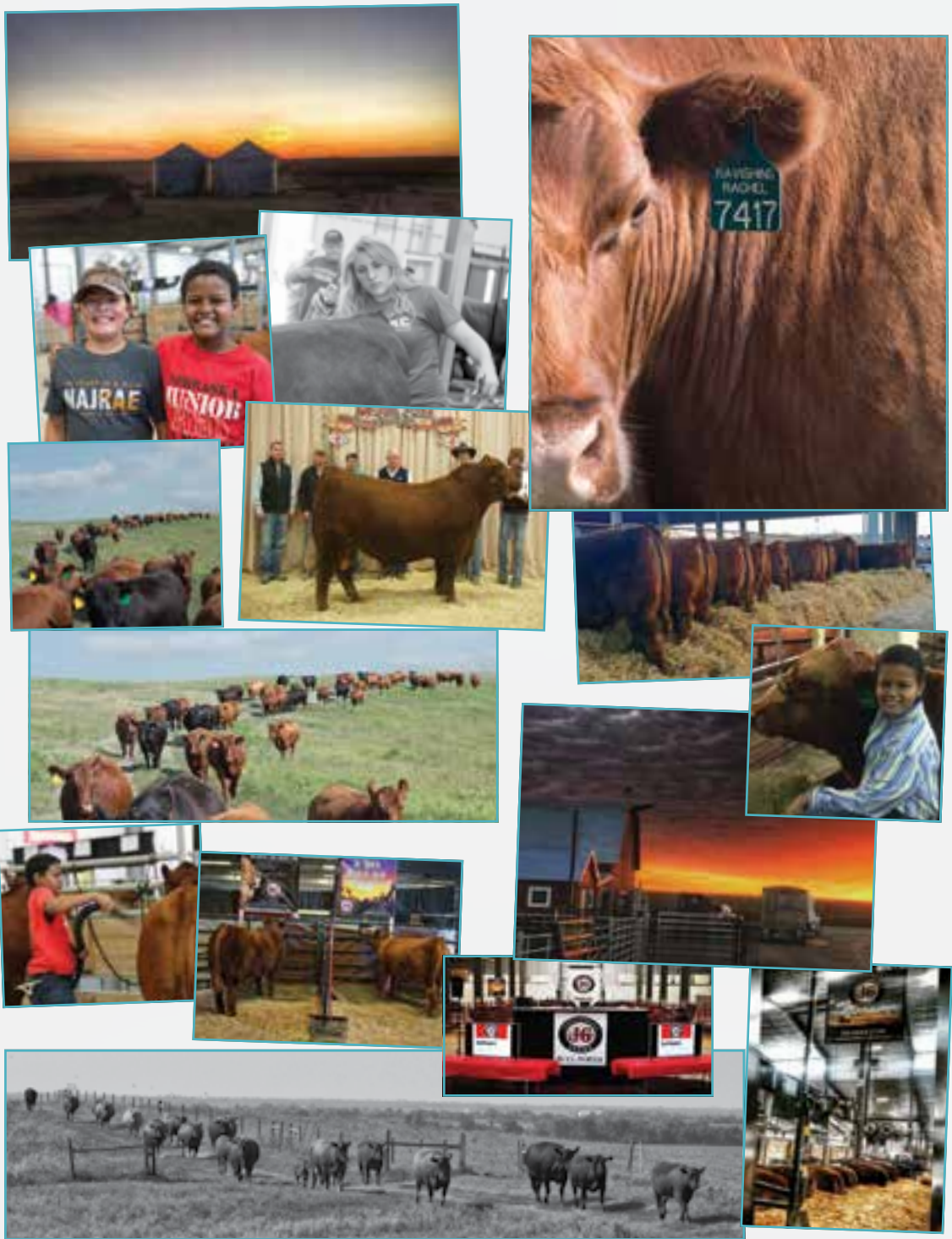
Randy Ratliff - 615.330.2735
Craig Talkington - 785.623.1789
Kelvin Jorgenson - 402.36-9475

SALE MANAGEMENT...



KK SEEDSTOCK CONSULTANTS SPECIALIZED SALES

Keith Kissee - Cell: 817.821.6263
Ph: 804.353.2220 - Fax: 804.353.2221
2300 Monument Ave., Richmond, VA 23220
kkseedstock@comcast.net - www.kkseedstock.com



It is with great anticipation that I welcome you to The Legacy Collection Sale of J6 Farms, November 24, 2015. It is to be held at the Nebraska State Fairgrounds, just up the road from the farm in Grand Island, Nebraska. This is one of the most advance groups of Red Angus, SimAngus and Simmental genetics offered this year.

David Spencer and his family are among the most dedicated breeders of pedigree livestock in North America. Their long-standing commitment to the industry is well documented in the lots outlined in this sale catalog. The pedigrees are current and breed-leading, and the phenotypes are fault-free in their design and movement.

Genetics selected from this offering will prove to be wise and timely investments for the future. The guesswork has been eliminated by the selection, breeding and genetic evaluations of the J6 Farms management team.

Make plans to be with us for this sale of national importance. Come early to enjoy the hospitality and evaluate the great offering.

I plan to be Grand Island several days prior to the sale. Please contact me if there is anything I, or anyone can do to assist you in making selections from this outstanding offering.

Sincerely,

Keith Kissee

LOT 1



RED ANGUS DONOR

SLGN STONY'S SAVANNAH



Triple Crown Winner
 Grand Champion Female, 2006 NAILE
 Grand Champion Female, 2007 NWSS
 Grand Champion Female, 2007 FWSS

SLGN Stony's Savannah is remembered during her show career as one of the best females of any breed anywhere. The female, with Cassie Johnson at the halter, was selected as a young heifer calf that would become the reigning female champion at the three big shows. A great accomplishment as a young heifer, she has eclipsed that record based upon her progeny from a variety of different sires. Her offspring have been in great demand, and she has many years of extraordinary production in front of her.

The female is an impressive mature female, and she has become one of the great donor females in the industry. Her family legacy will involve countless young progeny that will continue to pace the breed based upon her unflinching ability to produce the great ones. Her progeny by PZC TMAS Firestone 1800 and WEBR TC Card Shark have been exceptional individuals from the ET program. It takes a lifetime to breed females of this high of quality, and SLGN Stony's Savannah sells as one to continue to produce excellence in the breed.

RED ANGUS DONOR



SLGN STONY'S SAVANNAH

100% AR - 2/18/2006 - 1090795 - CEJN 605 - Cat: A

PERKS ADVANCE 121R
SLGN ADVANCE 45P
 MISS MFIN MYSTIC M5

HOLDEN HI HO 574
LCC STONY LA996
 BJR MS STONY 4X-516

RBJR ADVANCE A709
 PERKS MISS RAMBO 8105
 GLACIER LOGAN 210
 MFIN FINCH'S FLORA G6
 BJR HI HO 916
 BECKTON EOLA Z025 CB
 BJR MONU 4X-303
 BJR MS STONY 1193-3124

BW
75
ADJ WW
638
ADJ YW
974

HB	GM	CD	BW	WW	YW	MK	HPG	CM	MB	YG	CW	RE
100	49	0	0.6	63	100	8	9	6	0.27	-0.06	30	0.12

Selling Half Interest with Option to Double Up
 Open & Ready For Immediate Reproduction



3 EMBRYOS

100% AR - Cat: A

VGW GAME PLAN 816
SIX MILE & CO JAGGER 780A
 RED SIX MILE CHETA 702W

SLGN ADVANCE 45P
SLGN STONY'S SAVANNAH
 LCC STONY LA996

VGW GAME PLAN 508B
 VGW TW DOLL 0270
 RED SIX MILE SAKIC 832S
 RED SIX MILE CHETA 716S
 PERKS ADVANCE 121R
 MISS MFIN MYSTIC M5
 HOLDEN HI HO 574
 BJR MS STONY 4X-516

HB	GM	CD	BW	WW	YW	MK	HPG	CM	MB	YG	CW	RE
		1	0.3	62	93	13	9	7	0.34	0.05	26	-0.06

LOT 2



RED ANGUS DONOR

TC ELLIE 32Z



TC ELLIE 32Z

100% AR - 3/12/2012 - 1497271 - TCB 32Z - Cat: A

BUF CRK HOBO 1961
3 ACES SIDWAYS
 TROWBRIDGE LANA 707

NBAR HAMLEY S913
WEBR MS ELLIE 1024
 WEBR MS. ELLIE 14S

BUF CRK HOBO 1413
 BUF CR CARRIE VC1174
 J BAR 7 GRAND CANYON 2222
 LANA GAL N78
 PIE BILLINGS 487
 NBAR KELLY 913
 WEBR DOC HOLLIDAY 2N
 PFFR MS BURKE 022

BW
65
ADJ WW
ADJ YW

HB	GM	CD	BW	WW	YW	MK	HPG	CM	MB	YG	CW	RE
62	47	1	0.1	52	76	15	10	7	0.34	0.06	15	-0.23

Selling Half Interest with Option to Double Up. J6 Farms retains the right to one flush if the buyer chooses to double up their bid.
 Due 3/1/16 to Six Mile & Co Jagger 780A

Division Champion Female, 2012 NAILE
 Grand Champion Female at the side of her dam, 2012 NAILE

Open Ready for immediate reproduction

TC Ellie 32Z is the most advanced member of the Ellie family that has become one of the most significant breeding lines in the Red Angus breed. TC Ellie 32Z was a captivating female, along side of her perfectly constructed dam when they were selected as the Grand Champion Female at the 2012 NAILE in Louisville. Few females of any breed has the absolute knock out profile as does this young donor female. She is bred from a long line of females and herd sires that have assisted in fueling the interest and expansion of the Red Angus breed. The entire breeding line has emerged as some of the most important genetics for breed to prosper.

When analyzing this daughter of 3 Aces Sideways, the word perfect comes to mind. She is an extraordinary example of a modern day breeding female that can set the tone for the future expansion of the breed. Years and years of selection has yielded this remarkable productive cow, and she will emerge as one of the all time greats of the industry. This is one of the great ones to ever sell at auction.

LOT 3



*Focus
Jake*

RED ANGUS DONOR

WR MS BETTY 9035



RED ANGUS DONOR



WR MS BETTY 9035

100% AR - 4/2/2009 - 1301984 - WR 9035 - Cat: A

MLK CRK CUB 722
WEBR DR. PHIL
 WEBR MS DOLLY 1L

 RAVISHING ADVANCER 363
WR MS BETTY 640
 TMAS MS BETTY 120

GLACIER CUB 446
 MLK CRK LAKOTA 152-HOBO
 BADLANDS MR BEEF 805
 LMAN SELMA 9192
 PERKS ADVANCER 9088
 4L MS RAMBO R726
 BUF CRK CHF 824-1658
 ETR MISS BETTY 344

BW
75
ADJ WW
669
ADJ YW

HB	GM	CD	BW	WW	YW	MK	HPG	CM	MB	YG	CW	RE
36	46	0	1.1	65	97	15	5	8	0.19	0.28	29	-0.49

Selling Half Interest

Reserve Supreme Champion Female, 2010 Nebraska State Fair
 Grand Champion Female, 2010 NAILE • Reserve Grand Champion Female, 2011 FWSS

WR Ms Betty 9035 is one of the great females in the J6 donor herd. The excellent former show heifer and prolific and accomplished donor female offers some of the best genetics for the future of the industry. The storied pedigree is only surpassed by her achievements as a donor female of the highest degree. Few Red Angus females have the record of this exclusive donor, and her combination of phenotype, genotype and production is virtually unmatched in the industry. Her balance EPD tabulation is indicative of excellence that lies within the possibilities and probabilities of her achieving progeny. The daughter of WEBR Dr. Phil is from the masterfully designed maternal lineage that make this one of the greatest of all the donors in production at J6 Farms.

Her progeny by PZC TMAS Firestorm 1800 are a part of this sale inventory. The three females are among the most highly accomplished individuals in the recent calf crop, and the entire family is made available through this Legacy Collection Sale. It is the inaugural female production sale of J6 Farms, and it is fitting that a cow family of this caliber is offered as highlight for producing superlative genetics for generations to come. As the Red Angus breed continues to expand year after year, genetics of this quality are needed to supply the breed with ample genetic material to meet the demand of the new expansion of purebred and commercial breeders.

With this donor female, J6 Farms is sharing a portion of their future with the new owner.

LOT 4A



LOT 4B



SELLING CHOICE...

4a

J6 MS BETTY ON FIRE C 504

100% AR - 3/1/2015 - 1749476 - EDRD C504 - Cat: A

RED SIX MILE SAKIC 832S
PZC TMAS FIRESTORM 1800 ET
 GT CITA 4060

WEBR DR. PHIL
WR MS BETTY 9035
 WR MS BETTY 640

RED SIX MILE AVIATOR 217P
 RED SIX MILE SIERA 257P
 CITATION 138
 JMDF MISS LANA
 MLK CRK CUB 722
 WEBR MS DOLLY 1L
 RAVISHING ADVANCER 363
 TMAS MS BETTY 120

BW
82
ADJ WW
609
ADJ YW

HB	GM	CD	BW	WW	YW	MK	HPG	CM	MB	YG	CW	RE
54	46	1	1.1	60	86	19	6	11	0.17	0.16	23	-0.36

Open Heifer

J6 Ms Betty On Fire C 504 is genetically derived from some of the most powerful blood available to the seedstock industry. The March-born heifer is a perfect blend of phenotype and genotype, and she is from one of the most important breeding families in place at J6. Decades of the best are outlined in the pedigree of this show heifer prospect, and she sells as a part of the most distinguished blood available in the Red Angus breed. She is one of three excellent heifer calves from the same great flush. Their perfected blood over time has generated this great set of genetics that are offered here. She is an extraordinary display of the genetics that have surfaced to the very top of the entire breed. This is a stand out female that will be extremely competitive as a show heifer and a pillar donor female for the future. Her dam is the popular champion and her sire is the sire of multiple winners across North America. She sells as a highlight from one of the best cow families from one of the best breeding programs in the industry.

4b

J6 BETTY C507

100% AR - 3/5/2015 - 1749477 - EDRD C507 - Cat: A

RED SIX MILE SAKIC 832S
PZC TMAS FIRESTORM 1800 ET
 GT CITA 4060

WEBR DR. PHIL
WR MS BETTY 9035
 WR MS BETTY 640

RED SIX MILE AVIATOR 217P
 RED SIX MILE SIERA 257P
 CITATION 138
 JMDF MISS LANA
 MLK CRK CUB 722
 WEBR MS DOLLY 1L
 RAVISHING ADVANCER 363
 TMAS MS BETTY 120

BW
78
ADJ WW
645
ADJ YW

HB	GM	CD	BW	WW	YW	MK	HPG	CM	MB	YG	CW	RE
54	46	1	1.1	60	86	19	6	11	0.17	0.16	23	-0.36

Open Heifer

J6 Betty C507 is the exciting March heifer who was generated from the best lines known to the industry. She has the added depth, dimension, profile and future to consider as one of the best prospects to sell this year. She is the perfected and blended version of the next generation step from her important dam, who is also included in the exclusive genetic offering from J6. The female, sired by PZC TMAS Firestorm 1800, is a paternal sister to some of the greatest seedstock in the world. He, in turn, has sired some of the best individuals recorded with the Red Angus Association of America, and his influence has assisted in moving the entire breed to a more significant role as a dominant genetic force within the entire industry. She, and her other two sisters, are from the great combination from the exciting female base of WR Ms Betty 640. The genetics represented here are among the Who's Who of the entire purebred beef cattle sector. She is patterned in the same design as her unparalleled sire and dam. Breed excitement and new horizons are a part of this special female.

LOT 5



LOT 6



5

J6 BETTY C805

100% AR - 3/28/2015 - Applied For - J6RA C805 - Cat: A

RED SIX MILE SAKIC 832S
PZC TMAS FIRESTORM 1800 ET
 GT CITA 4060

WEBR DR. PHIL
WR MS BETTY 9035
 WR MS BETTY 640

RED SIX MILE AVIATOR 217P
 RED SIX MILE SIERA 257P
 CITATION 138
 JMDF MISS LANA
 MLK CRK CUB 722
 WEBR MS DOLLY 1L
 RAVISHING ADVANCER 363
 TMAS MS BETTY 120

BW
78
ADJ WW
645
ADJ YW

HB	GM	CD	BW	WW	YW	MK	HPG	CM	MB	YG	CW	RE
		1	1.1	60	86	19	6	11	0.17	0.16	23	-0.35

Open Heifer

J6 Betty C805 is one of three full sisters from the aggressive embryo transplant program in place at J6 Farms. Years and years of successful breeding and genetic advancement is combined into this March heifer, and she represents the best that can be attained within the breed. She is a part of an intriguing trio of heifer calves that are among the most exciting calves ever born at J6. The full dimension and perfectly conformed female is a show heifer and donor cow candidate. She is a big, outlined female who can be the heifer to bring home the bacon from the most heavy competition. Most visitors at J6 are evenly split upon which female is best. This genetic combination has been as successful as any in the show ring, and she is from the proven breed leaders that are indicated in her pedigree as her sire and dam. She is royally bred, and she is exhibiting her selectiveness through her impressive profile. Championships are crowned by the great ones that will continue to lead the industry. No better breed leader is available to the industry than this excellent heifer.

6

J6 LAKINA C807

100% AR - 3/15/2015 - Applied For - J6RA C807 - Cat: A

WEBR DOC HOLLIDAY 2N
WEBR TC CARD SHARK 1015
 PFFR MS NYACK 237

UBAR SEQUOIA 202
UBAR LAKINA 6200
 UBAR LAKINA 017

MLK CRK CUB 722
 WEBR MS DOLLY 1L
 GLACIER NYACK 688
 RRM MISS BONUS 506
 BJR HIGH CAPACITY 008
 FORSTER COPPRQUEEN 7168
 HOLDEN HI HO 7151
 BJR LAKINA 502-6243

BW
ADJ WW
ADJ YW

HB	GM	CD	BW	WW	YW	MK	HPG	CM	MB	YG	CW	RE
		4	-2.7	49	75	18	11	8	0.28	0.04	11	0.23

Open Heifer

J6 Lakina C807 is a March-born heifer from one of the long-standing cow families at J6. The daughter of WEBR TC Card Shark 1015 is from some of the most dominant family lines in the breeding herd, and this prospect is one of the top ones in the offering. The progeny from the highly accomplished WEBR TC Card Shark 1015 are among the most appreciated in the industry, and this heifer calf is from the same genetic construction as many of the past champions he has sired. Her dam is one of the top producing females in the breeding herd, and several of the top bulls from the 2015 bull sale were from this good breeding female. She is one of the excellent show-heifer prospects from the J6 program who is available through this sale offering. This heifer can have a great career as a show heifer and productive breeding female for years to come.

LOT 8



J6 BOXSTER C505

100% AR - 4/3/2015 - 1749319 - WEEZ C505 - Cat: A

SIX MILE GAME FACE 164Y
SIX MILE TAURUS 519A
 RED SIX MILE SHAWNEE 116T

NBAR HAMLEY S913
WR MS PORCHE 0030
 GT CITA 4060

VGW GAME PLAN 816
 RED SIX MILE LAKOTO 35W
 5L NORSEMAN KING 2291
 RED CROWFOOT SHAWNEE 9124J
 PIE BILLINGS 487
 NBAR KELLY 913
 CITATION 138
 JMD MISS LANA

BW
79
ADJ WW
ADJ YW

HB	GM	CD	BW	WW	YW	MK	HPG	CM	MB	YG	CW	RE
65	47	2	0.5	53	77	21	7	4	0.26	0.01	16	0.02

Open Heifer

J6 Boxster C505 is the first progeny to sell from J6 Farms sired by Six Mile Taurus 519A. He, in turn, was selected as the Grand Champion Bull at the 2014 National Western Stock Show, and one of the most appreciated sires within the Red Angus business. The son of Six Mile Game Face 164Y is now becoming one of the direct daughters of GT Cita 4060. She, in turn, is the female that has become one of the absolute undisputed support females of the breed. Her progeny are in leadership positions throughout North America, and her influence is immeasurable within the breed. J6 Boxster C505 shares her heritage with some of the top individuals in the sale offering, and this female is offered from the very heart of the breeding herd at J6 Farms. This is a special lot.

LOT 8



J6 KURUBA C511

100% AR - 1/10/2015 - 1749624 - J6RA C511 - Cat: A

RED TOWAW INDEED 104H
J6RA BKE INDEED
 RED SIX MILE FAVORITE 890S

RED WHEEL SIN CITY 43T
RED BLAIRS KURUBA 36X
 RED DAK KURUBA 12R

RED CC EXPANSION 5E
 RED TOWAW MOLLY 67C
 RED SIX MILE PRICELESS 268P
 RED JAS BELLE 3M
 RED NORTHLINE ATLANTIC CITY
 RED WHEEL PRIDE 16M
 RED JCC FREEDOM 82L
 RED JCC KURUBA 5M

BW
65
ADJ WW
ADJ YW

HB	GM	CD	BW	WW	YW	MK	HPG	CM	MB	YG	CW	RE
86	47	0	0.1	53	83	16	9	4	0.14	0.01	19	-0.03

Open Heifer

J6 Kuruba C511 is a January heifer sired by J6RA BKE Indeed, the bull bred from within the program that has become a big part of the genetic mix at J6. The type and kind sired by the appreciated son of Red Towaw Indeed 104H has pushed the quality and profile of the J6 breeding herd to even a stronger position within the industry. The paternal sisters to this female that sells here have been quite successful for J6 and their supporters. Her dam, Red Blairs Kuruba 36X, is an excellent breeding female from the Blair program in Saskatchewan. He was purchased as a top female from the National Western a few years back. This heifer is steeped in breed history and will prove to be a valuable breeding female. She will contribute greatly to a new program and the industry as a whole.

LOT 9



J6 LANA C508

100% AR - 2/21/2015 - 1749474 - J6RA C508 - Cat: A

RED RMJ REDMAN 1T
RED LAZY MC CC DETOUR 2W
 RED LAZY MC BESS 12S

RED COCKBURN RIBEYE 308U
WCAT LANA 901Z
 TR LANA UT863

5L NORSEMAN KING 2291
 CROWFOOT KURUBA 4033P
 RED LAZY MC SMASH 41N
 RED LAZY MC BESS 73N
 RED BAR-E-L RIBEYE 103R
 RED WILBAR CORA 443P
 BECKTON JULIAN GG B571
 TR LANA G760

BW
78
ADJ WW
ADJ YW

HB	GM	CD	BW	WW	YW	MK	HPG	CM	MB	YG	CW	RE
114	49	9	-2.3	54	85	20	7	5	0.17	-0.06	17	0.17

Open Heifer

J6 Lana C508 is a late February heifer calf by Red Lazy MC CC Detour 2W. She is from an excellent producing female by Red Cockburn Ribeye 308U from the Wildcat program, and this female is a culmination of the some of the most consistent breeding lines available in the industry. The Lana family is one of the strongest of maternal influence in the breed, and the sires represented in this heifer indicate nothing but proven success. Generations of breed building are a part of the heritage of this heifer calf, and she is offered as an example of the best that can be generated at J6 Farms. The powerfully constructed female is complete from end to end, and she is one of the top ones to be offered.

LOT 10A



LOT 10B



SELLING CHOICE...

10a

J6 MS SIERA C502

100% AN - 4/6/2015 - 1749629 - J6RA C502 - Cat: A

MRLA 53W
MRLA NEW ERA 87Y
 RED MRLA MISS 845S

RED SIX MILE CUJO 800M
RED SIX MILE SIERA 257P
 RED BOUNTY B MISS SIERA BAR

S A V NET WORTH 4200
 RED BROX MS CHEROKEE 13N
 RED SODER CANYON 126M
 RED NORTH PEACE 11N
 BJR BRAVEHEART 3H
 RED PTTV PRIDE 3'97
 RED 77 BAR 556E
 RED RSL MISS SIERA 19A

BW
76
ADJ WW
ADJ YW

HB	GM	CD	BW	WW	YW	MK	HPG	CM	MB	YG	CW	RE
34	47	2	0.1	39	65	7	5	2	0.26	0.06	24	0.16

Open Heifer

J6 MS Siera C502 is an April-born heifer calf from some of the most sound and proven genetics in the breed. She is a part of the most expansive gene pool at J6 Farms, and her family heritage is one of the strongest anywhere. She is from the most recognizable blood in the industry, and it is perfectly harmonized into this exceptional heifer. This female is a maternal sister to Red Mile Sakic 832S, and she is the most advanced version of this celebrated and historic line. Years of selective breeding has created this female that has been one of the most important in the industry throughout North America. The phenotype and genotype represented here are among the most appreciated genetics in the land.

10b

J6 MS GLORIA C503

100% AN - 4/6/2015 - 1749634 - J6RA C503 - Cat: A

MRLA 53W
MRLA NEW ERA 87Y
 RED MRLA MISS 845S

5L NORSEMAN KING 2291
RED SIX MILE GLORIA 746W
 RED SIX MILE GLORIA 361T

S A V NET WORTH 4200
 RED BROX MS CHEROKEE 13N
 RED SODER CANYON 126M
 RED NORTH PEACE 11N
 VGW KING OF THE WEST
 NORSEMAN 1312 PJM
 RED SIX MILE RICOCHET 478R
 RED SIX MILE GLORIA 182N

BW
78
ADJ WW
ADJ YW

HB	GM	CD	BW	WW	YW	MK	HPG	CM	MB	YG	CW	RE
81	51	4	0.4	66	112	22	9	2	0.46	0.03	37	0.29

Open Heifer

J6 Ms Gloria C503 and her paternal sister, J6 Ms Siera C502, are excellent additions the offering. Both females are from some of the best cow families at J6 and are from the strong foundation lines generated in the Six Mile program. The heifer is from the long-lasting Gloria cow family that has generated decades of exceptional lines for the industry. The dam, Red Six Mile Gloria 746W, is a powerful individual by 5L Norseman King 2291, one of the most proven and popular sires in the history of the breed. The phenomenal performance and maternal strength represented here through the EPD tabulation, makes this one of the more superior breeding females in the offering. She is an exciting profiled female who is an integral part of the combination genetics available through this sale offering.

LOT 11



11

J6 ANGIE C509

100% AR - 4/14/2015 - 1749623 - J6RA C509 - Cat: A

RED TOWAW INDEED 104H
J6RA BKE INDEED
 RED SIX MILE FAVORITE 890S

MESSMER PACKER S008
GMRA ANGIE 052
 GMRA ANGIE 442

RED CC EXPANSION 5E
 RED TOWAW MOLLY 67C
 RED SIX MILE PRICELESS 268P
 RED JAS BELLE 3M
 MESSMER JOSHUA 019P
 MESSMER MILLIE 124P
 BIEBER MAKE MIMI 7249
 GMRA ANGIE 800

BW
75
ADJ WW
ADJ YW

HB	GM	CD	BW	WW	YW	MK	HPG	CM	MB	YG	CW	RE
111	48	5	-2.3	52	76	17	10	6	0.33	-0.05	12	0.14

Open Heifer

J6 Angie C509 is an April heifer by the solid breeding sire, J6 BKE Indeed 104H. The female has all the parts of a leading breeding female, and she is in a dead-on package and will fit the bill for a competitive show heifer. She is from some of the most familiar lines on the maternal side, and her dam, by Messmer Packer S008 represents some of the most problem free genetics in the industry. The calving-ease genetics from the Packer line adds perfectly to the entire phenotype and genotype of the heifer. This is one of the big time individuals that is ready for the show ring at sale time, and later, be an exceptional breeding female.

LOT 12



12

J6 LAKINA C808

100% AR - 3/30/2015 - Applied For - J6RA C808 - Cat: A

WEBR DOC HOLLIDAY 2N
WEBR TC CARD SHARK 1015
 PFFR MS NYACK 237

UBAR SEQUOIA 202
UBAR LAKINA 6200
 UBAR LAKINA 017

MLK CRK CUB 722
 WEBR MS DOLLY 1L
 GLACIER NYACK 688
 RRM MISS BONUS 506
 BJR HIGH CAPACITY 008
 FORSTER COPRQUEEN 7168
 HOLDEN HI HO 7151
 BJR LAKINA 502-6243

BW
ADJ WW
ADJ YW

HB	GM	CD	BW	WW	YW	MK	HPG	CM	MB	YG	CW	RE
		4	-2.7	49	75	18	11	8	0.28	0.04	11	0.23

Open Heifer

J6 Lakina C808 is a late March heifer by the prominent sire, WEBR TC Card Shark 1015. She has as much look as anything in the offering, and she is beautifully designed from end to end. The progeny by WEBR TC Card Shark 1015 have been as popular and competitive as any in the breed today. The heifer is from the Lakina family, and her dam, UBAR Lakina 6200 is one of the very top genetic packages in the cowherd at J6. Over the years of successful breeding, these lines of consistent generations have made this one of the most significant in the offering. This is a can't-miss opportunity to obtain the greatest blood in the breed.

LOT 13



13

J6 PORCHE C806

100% AR - 3/15/2015 - Applied For - J6RA C806 - Cat: A

RED SVR GANGSTER 14S
RED NORTHLINE FAT TONY 605U
 RED NORTHLINE RUBY 0305N

NBAR HAMLEY S913
WR MS PORCHE 0030
 GT CITA 4060

RED GEIS HI HO 180'04
 RED DWAJO DUCHESS 75M
 RED NORTHLINE ROB ROY 122K
 RED NORTHLINE RUBY 305K
 PIE BILLINGS 487
 NBAR KELLY 913
 CITATION 138
 JMDF MISS LANA

BW
ADJ WW
ADJ YW

HB	GM	CD	BW	WW	YW	MK	HPG	CM	MB	YG	CW	RE
		3	-0.3	48	70	24	5	6	0.38	-0.02	11	0.11

Open Heifer

J6 Porche C806 is from some of the lines that have been most successful in the show ring. This March heifer is from one of the most productive females in the J6 herd, WR MS Porche 0030. When evaluating the entire sale offering, the influence of this great daughter of NBAR Hamley 5913 and GT Cita 4060, it is easy to see the influence of this great donor cow. Of course the genetics of Red Northline Fat Tony 605U have been scattered across North America. The Canadian sire has been a source of some of the most competitive and appreciated progeny throughout North America. This heifer is bred in the purple, and she will make a big contribution to a breeding herd for years and years to come.

LOT 14



14

J6 SUE ELLEN C809

100% AR - 1/15/2015 - Applied For - J6CR C809 - Cat: A

PIE BILLINGS 487
NBAR HAMLEY S913
 NBAR KELLY 913

WEBR DOC HOLLIDAY 2N
WEBR MS SUE ELLEN 18S
 PRESSER'S DAISY 201

PERKS ADVANCE 121R
 PIE RAMBO'S PRIDE 0289
 NBAR DANCE 531
 NBAR KELLY 700
 MLK CRK CUB 722
 WEBR MS DOLLY 1L
 BJR JR 107
 PRESSER'S DAISY

BW
ADJ WW
ADJ YW

HB	GM	CD	BW	WW	YW	MK	HPG	CM	MB	YG	CW	RE
		4	-2.2	53	77	26	9	8	0.51	0.07	12	-0.23

Open Heifer

J6 Sue Ellen C809 is the January heifer who has been the favorite of several visitors at the farm. She is the direct daughter of NBAR Hamley 5913, and she comes to the front in terms of genetic lineage and breeding perfection. Her dam, WEBR Ms Sue Ellen 18S, by WEBR Doc Holliday 2N, is one of the most productive and attractive cows at J6. This strong maternal pedigree will assist this female as she continues on as a breeding female. This heifer will be one of the top ones offered through this sale, and her stacked pedigree of breed leading genetics will make her a significant herd addition.

LOT 15



15

MAJESTIC BLOCKANA B208

100% AR - 11/5/2014 - Applied For - SGMR B208 - Cat: A

RED SSS SOLDIER 365W
RED LAZY MC TROOPER 21Y
 LAZY MC EXPRESS 60W

RED SIX MILE SAKIC 832S
WHITESTONE BLOCKANA X312
 FEDDES BLOCKANNA 807

RED SVR KNIGHT 236T
 RED SSS BELLE 342S
 RED RMJ REDMAN 1T
 STEWART EXPRESS 304N
 RED SIX MILE AVAIATOR 217P
 RED SIX MILE SIERA 257P
 LMN IMPRESSIVE ROB 1095B
 FED'S BLOCKANNA 692

BW
78
ADJ WW
ADJ YW

HB	GM	CD	BW	WW	YW	MK	HPG	CM	MB	YG	CW	RE
		1	-0.1	60	90	26	8	7	0.12	0.00	23	0.03

Open Heifer

Majestic Blockana B208 is an extraordinary female with a royally bred pedigree from the absolute apex of the Red Angus seedstock industry. The perfectly conformed, dark red female has become a sensation ever since she was a baby. This maternally superior female is a descendent of the Feddes Blockana 807 foundation female that has become one of the pillars of the entire breed. Whitestone Bockana X312 is the daughter of Red Six Mile Sakic 832S, from the great brood matron. She was one of the strongest contenders when she was shown in the Majestic Meadows show string. Incidentally, she has some composite females that are making big progress in the Texas shows this fall. Majestic Blockana B208 is one of the great ones sired by Red Lazy MC Trooper 21Y, the 2014 National Champion Red Angus Bull.

LOT 16



16

MAJESTIC GIRLIE GIRL B201

100% AR - 9/16/2014 - 1734182 - SGMR B201 - Cat: A

RED SSS SOLDIER 365W
RED LAZY MC TROOPER 21Y
 LAZY MC EXPRESS 60W

4L SUPER VISION R2292
TCB LUANNA 08S
 MEADO-WEST LUANNA

RED SVR KNIGHT 236T
 RED SSS BELLE 342S
 RED RMJ REDMAN 1T
 STEWART EXPRESS 304N
 GLACIER CHATEAU 744
 4L MR RAMBO R709
 MEADO-WEST JAZZ
 MEADO-WEST BLANCHE

BW
78
ADJ WW
ADJ YW

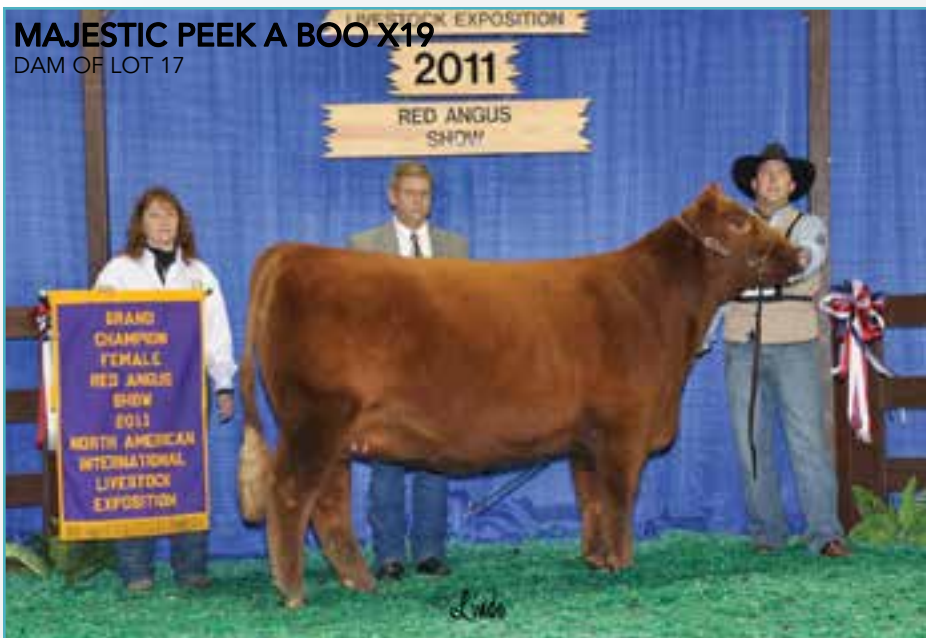
HB	GM	CD	BW	WW	YW	MK	HPG	CM	MB	YG	CW	RE
61	48	-4	0.4	56	85	14	6	5	0.19	-0.02	20	0.23

Open Heifer

Majestic Girlie Girl B201 is a daughter of impressively accomplished parents. Both sire and dam are nationally crowned champions—Red Lazy MC Trooper 21Y was the Grand Champion Bull at the 2014 National Show in Fort Worth, Texas; and TCB Luanna 08S was the Reserve Grand Champion Female at the 2007 National Western Stock Show in Denver. Among the most brilliantly designed females in the program, this female is genetically engineered to be the culmination of the very best traits in the breed. She carries forth the very best lineage of the Majestic Meadows program to add even more power and punch to the famous J6 breeding herd. This female holds some of the breed's greatest individuals in the lines of her pedigree derivation.

MAJESTIC PEEK A BOO X19

DAM OF LOT 17



17

MAJESTIC PEEK A BOO B49

100% AR - 8/5/2014 - Applied For - SGMR B49 - Cat: A

VGW GAME PLAN 508
4L VISIONARY 100
 PERFORMISS OF 4L 181S

MAJESTIC LIGHTNING 717 SGMR
MAJESTIC PEEK A BOO X19
 MEADO-WEST PEEK-A-BOO

LCC IMF B054M
 VGW PT-DORY 0361
 4L SUPER VISION R2292
 MS ADVANCER OF 4L RMS
 WHITSTONE CAYENNE 423R
 WHITSTONE BLOCKANNA R227
 MEADO-WEST JAZZ
 MEADO-WEST LAVONNE 110L

BW
80
ADJ WW
ADJ YW

HB	GM	CD	BW	WW	YW	MK	HPG	CM	MB	YG	CW	RE
		-2	1.8	77	120	15	10	4	0.04	0.12	43	0.04

Open Heifer

Majestic Peek A Boo B49 is one of great muscular dimension and carcass superiority. She is a recent version of the best of the Meado-West Peek-A-Boo cow family, and her dam, Majestic Peek A Boo X19, was the Grand Champion Female at the 2011 North American International Livestock Exhibition in Louisville. She has become one of the great daughters of Majestic Lightning 717 in production, and she transmits monumental performance and trait leading stature to a perfect and efficient profile. Her sire, 4L Visionary 100, is one of the thickest muscled young Red Angus sires in the industry. She proved to be an excellent choice as a sire for this heifer. This is a real breeding piece and is offered as a true breed leader for generations to come.

LOT 18



18

MAJESTIC BLOCKANA B132

100% AR - 9/13/2014 - 1734176 - SGMR B132 - Cat: A

RED COMPASS MULBERRY 449M
RED FINE LINE MULBERRY 26P
 RED DUS FAYETTE 8G

LCC GLANCE B062M
WHITSTONE BLOCKANNA X234
 FEDDES BLOCKANNA 807

RED HR RAMBO ET 91K
 RED BRYLOR MISS ROC 20H
 SILVEIRAS REDFORD
 RED MC DOUGALL FAYETTE 59A
 BECKTON LANCER F442T
 LCC ROCKETTE K1105
 LMN IMPRESSIVE ROB1095B
 FED'S BLOCKANA 692

BW
70
ADJ WW
ADJ YW

HB	GM	CD	BW	WW	YW	MK	HPG	CM	MB	YG	CW	RE
123	49	-2	-0.2	62	102	18	13	8	0.24	0.10	31	0.23

Open Heifer

Majestic Blockana B132 is from some of the most time-honored genetics in North America. This female is the most recent version of the Whitestone Blockanna X234 family lineage. Her dam was a consistent and dependable show heifer who was one of the top contenders in national competition throughout her career. A many-time division champion, she has emerged as one of the great donor females in the Red Angus industry. Her sire, Red Fine Mulberry 26P, needs absolutely no introduction. His lineage and influence has been obvious in the advancement and efficiency of Red Angus seedstock. With the genetic merging of these great lines, this female represents some of the most exciting seedstock in the industry.

SIX MILE & CO JAGGER



RED ANGUS REFERENCE SIRE



SIX MILE & CO JAGGER 780A

100% AR - 3/13/2013 - 1626956 - SIXM 780A - Cat: A

VGW GAME PLAN 508
VGW GAME PLAN 816
 VGW TW DOLL 0270

RED SIX MILE SAKIC 832S
RED SIX MILE CHETA 702W
 RED SIX MILE CHETA 716S

LCC IMF B054M
 VGW PT- DORY 0361
 TW MILKY WAY 2038
 VGW DIV-DOLL 9716
 RED SIX MILE AVIATOR 217P
 RED SIX MILE SIERA 257P
 RED TOWAW INDEED 104H
 RED VIDAL'S CHETA 389D

BW
ADJ WW
ADJ YW

HB	GM	CD	BW	WW	YW	MK	HPG	CM	MB	YG	CW	RE
115	47	2	0.0	61	87	19	10	8	0.42	0.16	21	-0.24

Many of the bred female in this offering sell with his service.

His powerful and structurally sound dam was the high-selling cow at the 2012 Red Roundup sale at \$21,000 for half interest to Triple L Angus, SK, and Wright's Livestock, SK. Jagger was the calf she was carrying at that time. Jagger was the Reserve Champion Junior Bull Calf at both Agribition and Denver. He was been undefeated in division, winning Champion Yearling bull at both Edmonton Farmfair and Regina Agribition. He went on to win Reserve Grand Champion Bull at the 2014 Agribition.

All his banners and awards are awesome, but his greatest value lies in the fact that he is truly a masterful and aggressive breeding bull. As a yearling, Jagger naturally covered 35 breeding females with not one open one in his pasture. He held his condition throughout as he is extremely easy fleshing. His bone structure and natural muscle has been admired by many astute cattlemen. Jagger is truly a great breeding bull.

LOT 19



19

J6 MS. RACHEL B446

100% AR - 3/1/2014 - 1679321 - J6RA B446 - Cat: A

RED SIX MILE SAKIC 832S
RED WRIGHTS 832S IRON HIDE 4
 RED BWB FAYE 48N OF TREND

RED SIX MILE AVIATOR 217P
 RED SIX MILE SIERA 257P
 RED BRYLOR NEW TREND 22
 RED BWB FAYE 77'00 OF 10H
 PIE BILLINGS 487
 NBAR KELLY 913
 MEADO-WEST JAZZ
 PANHANDLE RACHEL 499

BW
76
ADJ WW
ADJ YW

NBAR HAMLEY S913
TC RACHEL 04X
 MEADO-WEST POPPY 426P

HB	GM	CD	BW	WW	YW	MK	HPG	CM	MB	YG	CW	RE
60	45	3	-0.3	49	72	18	7	8	0.08	0.13	12	-0.08

Due 1/24/16 to Six Mile & Co Jagger 780A

J6 MS Rachel B446 is one of the most powerful bred females in the offering, and she is from some of the most celebrated lines of Red Angus breeding stock available to the industry. The female lineage represented here is from one of the most appreciated females at J6. Her dam, TC Rachel 04X, is an attractive female by NBAR Hamley S913, she has been responsible for some of the exceptional breeding bulls and females at J6. She carries the service of the popular Six Mile & Co Jagger 780A. Her calf to be born in January will represent the most progressive genetics available from J6 Farms.

LOT 20



20

J6 MS MONU B457

100% AR - 3/7/2014 - Applied For - J6RA B457 - Cat: A

RED SIX MILE SAKIC 832S
RED WRIGHTS 832S IRON HIDE 4
 RED BWB FAYE 48N OF TREND

RED SIX MILE AVIATOR 217P
 RED SIX MILE SIERA 257P
 RED BRYLOR NEW TREND 22
 RED BWB FAYE 77'00 OF 10H
 RED SSS MONU4X 237C
 RCRA SAMANTHA
 LTD BAND 1206-SHO109414
 TDT MISS F2 N2

BW
ADJ WW
ADJ YW

BJR MONU 4X-303
LRA MS. MONU 547
 MISS N2-S45

HB	GM	CD	BW	WW	YW	MK	HPG	CM	MB	YG	CW	RE
		2	-2.0	47	69	19	10	6	-0.06	0.07	8	-0.30

Due 1/24/16 to Six Mile & Co Jagger 780A

J6 Ms Monu B457 is the daughter of Red Wrights 832S Iron Hide 4, and she is one of two daughters in the offering by the great breeding sire by Red Six Mile Sakic 832S. Some of the most powerful commercial bulls produced at J6 have been sons of his, and much power and dimension are available through this cow family. Years of selective breeding have created the young bred female that is offered here, and she comes from deep within the J6 replacement group of heifers. She sells bred to one of the great young Red Angus sires in North America, Six Mile & Co Jagger 780A.

LOT 22

FULL SIB TO LOT 21



21

J6 MS SUE B477

100% AR - 3/5/2014 - Applied For - J6RA B477 - Cat: A

BUF CRK VALENTINO N031
WR MR. RED DAWG 5335
 TMAS MS FORTUNE 114

BFCK CHEROKEE CNYN 4912
WR MS HEIDI SUE 514
 DMS 4062 MS COMAND 6136

BECKTON JULIAN GG B571
 BUF CRK PRIMROSE 5679
 LMAN KING ROB 8621
 STRAKA MS FORTUNE 4109
 BUF CRK CHF 824-1658
 MRM 1431 8611 9109
 STRAKA 1116 COMAND 4062
 STRAKA MS 9026 RD 4019

BW
79
ADJ WW
79
ADJ YW
79

HB	GM	CD	BW	WW	YW	MK	HPG	CM	MB	YG	CW	RE
		1	2.0	78	119	19	10	2	0.24	-0.02	44	0.43

Due 1/24/16 to Six Mile & Co Jagger 780A

J6 Ms Sue B477 is a great bred heifer from the J6 herd, and she represents some of the most powerful performance in the industry. She has absolutely awesome trait-leading EPDs and she is bred from some of the most consistent lines known to exist. WR Mr Red Dawg 5335 is one of the good sires in the industry, and he is from a Thomas-bred female sired by Leachman King Rob daughter, from which much performance and maternal strength lies. Her dam, WR Ms Heidi Sue 514, is the daughter of BFCK Cherokee CnyN 4912. Both she, and her full sister, are among the most high-performing lines in the breed, and is offered from within the depths of the entire cow herd. The service to Jagger adds much to the entire genetic package.

22

J6 MS. HEIDI SUE B458

100% AR - 3/3/2014 - 1679324 - J6RA B458 - Cat: A

BUF CRK VALENTINO N031
WR MR. RED DAWG 5335
 TMAS MS FORTUNE 114

BFCK CHEROKEE CNYN 4912
WR MS. HEIDI SUE 514
 DMS 4062 MS COMAND 6136

BECKTON JULIAN GG B571
 BUF CRK PRIMROSE 5679
 LMAN KING ROB 8621
 STRAKA MS FORTUNE 4109
 BUF CRK CHF 824-1658
 MRM 1431 8611 9109
 STRAKA 1116 COMAND 4062
 STRAKA MS 9026 RD 4019

BW
79
ADJ WW
79
ADJ YW
79

HB	GM	CD	BW	WW	YW	MK	HPG	CM	MB	YG	CW	RE
61	49	1	2.1	79	122	20	10	3	0.25	-0.04	45	0.43

Due 1/24/16 to Six Mile & Co Jagger 780A

J6 Ms Heidi Sue B458 and her full sister are among the high performance-oriented females in the group. Perfected over time, the genetics represented here are from the very top of the family lines and represent some of the best seedstock in the industry. For generations, the genetics that form the tabulation of her pedigree are among the most renowned in the record book. From this lineage, some of the most honored genetics are available to the industry. Furthermore, she is a perfect match for the mating with Six Mile & Co Jagger 780A. The harmonious blending of the breed's best is available through this powerful female lot.

LOT 23



23

J6 MS. INSTINCT B427

100% AR - 2/1/2014 - 1679937 - J6RA B427 - Cat: A

RED CROWFOOT OLE'S OSCAR
RED SSS OLY 554T
 RED SSS GOLD EDGE 77R

RED LAZY MC CC DETOUR 2W
WCR MISS INSTINCT DE 148Z
 RSKY 6540 MS INSTINCT 0065

MLK CRK CUB 722
 RED CROWFOOT OMEGA 9179J
 5L NORSEMAN KING 2291
 RED SSS GOLD EDBE 714F
 RED RMJ REDMAN 1T
 RED LAZY MC BESS 12S
 DUFF BASIC INSTINCT 6501
 RSKY 0108 MS MAGICIAN 6540

BW
72
ADJ WW
615
ADJ YW

HB	GM	CD	BW	WW	YW	MK	HPG	CM	MB	YG	CW	RE
123	51	4	-3.9	58	93	16	7	3	0.37	-0.11	20	0.43

Due 2/27/16 to WEBR TC Card Shark1 015

J6 Ms Instinct B427 is a tremendous blend of the most powerful blood originating from Western Canada. The female is sired by Red SSS Oly 554T, the son of the legendary Red Crowfoot Ole's Oscar. Red SSS Oly 554T, in turn, is from the exciting blood of the Red SSS Gold Edge cow family that has been causing a sensation throughout North America. A daughter of Red Flying K Max 159Y from the Red SSS Gold Edge cow family commanded 50,000 through the recent Cowgirls Sale when she was purchased by Brad Arrowsmith of Basset, Nebraska, for his extraordinary collection of the world's best Red Angus seedstock. She is from an excellent female by Red Lazy MC CC Detour 77R, generated in the Wildcat herd. She sells safe in calf to TC Card Shark 1015, the former popular National Western Grand Champion Bull.

LOT 24



24

J6 MS LANA B403

100% AR - 2/1/2014 - Applied For - J6RA B404 - Cat: A

RED CROWFOOT OLE'S OSCAR
RED SSS OLY 554T
 RED SSS GOLD EDGE 77R

RED COCKBURN RIBEYE 308U
WCAT LANA 901Z
 TR LANA UT863

MLK CRK CUB 722
 RED CROWFOOT OMEGA 9179J
 5L NORSEMAN KING 2291
 RED SSS GOLD EDBE 714F
 RED BAR-E-L RIBEYE 103R
 RED WILBAR CORA 443P
 BECKTON JULIAN GG B571
 TR LANA G760

BW
ADJ WW
ADJ YW

HB	GM	CD	BW	WW	YW	MK	HPG	CM	MB	YG	CW	RE
		2	-3.2	66	106	16	8	6	0.50	0.03	28	0.11

Due 2/17/16 to Six Mile & Co Jagger 780A

J6 Ms Lana B403 is from the Lana cow family that has been one of the breed's most popular tribes for generations. The female has an impressive spread from birth to yearling weight EPD, and she packs muscle, performance and maternal linkage into a picture-perfect breeding female. Her dam, WCAT Lana 901Z, is a top female in the J6 herd. The daughter of Red Cockburn Ribeye 308U, is the dominant breeding sire who perfects the performance blood of the Ribeye lineage. This is one of the outstanding replacement females available to the industry through this elite sale of excellent genetics. She will have a calf in February by Six Mile & Co Jagger 780A.

LOT 25



25

J6 MS. SOPHIE B412

100% AR - 3/18/2014 - 1679931 - J6RA B412 - Cat: A

RED CROWFOOT OLE'S OSCAR
RED SSS OLY 554T
 RED SSS GOLD EDGE 77R

RED CORNER CREEK CASH 2R
WCR MISS SOPHIE CA 073Z
 HUS MS SOPHIE U095

MLK CRK CUB 722
 RED CROWFOOT OMEGA 9179J
 5L NORSEMAN KING 2291
 RED SSS GOLD EDBE 714F
 PIE ATLANTIC 2204
 RED NORTHLINE PRINCESS 59L
 HUST CHIEF SEQUOYA R336
 JWV CROSSBOW 292

BW
71
ADJ WW
797
ADJ YW

HB	GM	CD	BW	WW	YW	MK	HPG	CM	MB	YG	CW	RE
56	48	-4	-2.3	65	104	14	6	1	0.06	0.17	28	0.08

Due 3/30/16 to J6 Mr. Van B454

J6 Ms Sophie B412 is one of the excellent daughters of Red SSS Oly 554T. Her dam, WCR Miss Sophie CA 073Z, is one of the productive females in the J6 breeding herd, and she was selected for the sale as one of the leading breeding heifers in the auction. The depth and dimension of this female is a hallmark of the females being generated in the J6 herd. Females such as this are synonymous with the breeding stock to be found in the offering.

She sells bred to J6 Mr. Van B454 who is a full-sib to J6 Mr. Winkle who sold in our 2015 bull sale, as well as a full-sib to Lot 19 in this offering.

LOT 26



26

J6 MS INSTINCT B441

100% AR - 2/8/2014 - Applied For - J6RAB441 - Cat: A

RED CROWFOOT OLE'S OSCAR
RED SSS OLY 554T
 RED SSS GOLD EDGE 77R

RED WILBAR RELOAD 322X
WCR MISS DOLLY WI 143Z
 MVF DOLLY 3X

MLK CRK CUB 722
 RED CROWFOOT OMEGA 9179J
 5L NORSEMAN KING 2291
 RED SSS GOLD EDBE 714F
 RED TER-RON RELOAD 703T
 RED WILBAR QUEEN 45U
 S A V PIONEER 7301
 MVF DOLLY 328R

BW
ADJ WW
ADJ YW

HB	GM	CD	BW	WW	YW	MK	HPG	CM	MB	YG	CW	RE
		0	-2.8	59	100	14	8	4	0.54	-0.03	25	0.33

Due 1/24/16 to Six Mile & Co Jagger 780A

J6 Ms Instinct B441 is the daughter of Red SSS Oly 554T, and represents the strong blood that has been generated from this excellent lineage that is a part of the J6 breeding herd. The nicely balanced and long-patterned female serves the industry as an extraordinary individual from a strong maternal lineage. She traces to the blood that has been merged successfully into the Red Angus herd book. She is backed with some of the best Angus genetics, no matter the color. Stability and breed superiority make this another of the nice lots from the replacement pen. Her dam, a daughter of Wilbar Reload 322X, is a good milking and breeding female who contains the best lines from Western Canada.

LOT 27



27

J6 MS BLACKBIRD B438

100% AR - 2/9/2014 - Applied For - J6RA B438 - Cat: A

NBAR HAMLEY S913
WCR CAM 1Y
 RED SOO LINE COUNTESS 6409

 RED COCKBURN RIBEYE 308U
WCAT BLACKBIRD 224Z
 HUS MS BLACKBIRD 621

PIE BILLINGS 487
 NBAR KELLY 913
 RED DWAJO GLADIATOR 32L
 RED JCC COUNTESS 14G
 RED BAR-E-L RIBEYE 103R
 RED WILBAR CORA 443P
 HUST CHIEF SEQUOYA R336
 RJI BLACKBIRD 621

BW
ADJ WW
ADJ YW

HB	GM	CD	BW	WW	YW	MK	HPG	CM	MB	YG	CW	RE
		6	-2.5	51	72	23	8	5	0.43	-0.09	9	0.00

Due 1/24/16 to Six Mile & Co Jagger 780A

J6 Ms Blackbird B438 is powerfully designed and is from some of the great lines of the breed. WCR Cam 1Y is the son of NBAR Hamley S913 from the spectacular cow family of Red Soo Line Countess 6409. Her dam is sired by the popular Red Cockburn Ribeye 308U, the breeding sire who has proven to be a most successful and popular breeding sire. She is a bulky and broody female this will prove to be a good mating for Six Mile & Co Jagger 780A. This is a strong maternal line of females, and she will make one of the top replacement females in the offering.

LOT 28



28

J6 MS DELLA B404

100% AR - 1/20/2014 - Applied For - J6RA B404 - Cat: A

BUF CRK LANCER R017
MUSHRUSH IMPRESSIVE CN U216
 MUSHRUSH CANDICE LT R238

 FEDDES BIG SKY R9
MONTVUE R9 DELLA U251
 LSF DELLA K1431 S6098

BECKTON LANCER 9380
 BUF CRK JULIET N036
 TR JULIAN LT 142
 MUSHRUSH CANDICE M011
 BIEBER MAKE MIMI 7249
 FEDDES LAKINA 310
 LCHMN ENTERPRISE 1370H
 LSF DELLA D109 K1431

BW
ADJ WW
ADJ YW

HB	GM	CD	BW	WW	YW	MK	HPG	CM	MB	YG	CW	RE
		7	-1.3	71	112	22	13	5	0.58	0.20	34	0.12

Due 1/24/16 to Six Mile & Co Jagger 780A

J6 Ms Della B404 has one of the largest EPD spreads in the offering. Sired by Mushrush Impressive CN U216, one of the most popular AI sires, this female is from a whale of a cow in the J6 breeding herd. Her dam, Montvue R9 Della U251, is an excellent daughter of Feddes Big Sky R9. The culmination of the breed's most proven lines are available through this breeding female. The status of the trait-leading tabulation is one great strength for the future of this female. She will have a great calf early next year by Six Mile & Co Jagger 780A.

LOT 29



29

J6 MS LOOKOUT B485

50% AR 50% XX - 3/18/2014 - Applied For - J6RA B485 - Cat: 3

RED TOWAW INDEED 104H
J6RA BKE INDEED
 RED SIX MILE FAVORITE 890S

B C LOOKOUT 7024
P R 1190 L O-629
 P R 629 205-554

RED CC EXPANSION 5E
 RED TOWAW MOLLY 67C
 RED SIX MILE PRICELESS 268P
 RED JAS BELLE 3M
 O C C LEGEND 616L
 GIBBET HILL MIGNONNE E37
 B A R EXT TRAVELER 205
 P R LISA 554

BW
ADJ WW
ADJ YW

HB	GM	CD	BW	WW	YW	MK	HPG	CM	MB	YG	CW	RE

Due 1/24/16 to VCL Olympian

Black/Red Carrier

J6 Ms Lookout B485 is an opportunity to obtain new and exciting blood for the industry through these black/red carrier females that sell as Lots 29 and 30. The female, sired by J6RA BKE Indeed, is from an impressive black female that is from some of the most famous genetics in the Angus gene bank. Future generations of relative outcross blood will be available through this excellent lineage. As this female as the base, a powerful new family line will be created for the Red Angus herd book.

LOT 30



30

J6 MS EMBLYNETTE B428

50% AR 50% XX - 2/1/2014 - Applied For - J6RA B428 - Cat: 3

PERKS CHATEAU 309R
COLEY'S WHEATLAND 992W
 BROWN MS LOGAN L7745

S A V BISMARCK 5682
SR-SAV EMBLYNETTE D 0919
 SAV EMBLYNETTE DIAMOND 6377

GLACIER CHATEAU 744
 PERKS MISS RAMBO 8105
 GLACIER LOGAN 210
 LCHMN ABIGAIL E1013
 G A R GRID MAKER
 S A V ABIGALE 0451
 PRO TREND 9042 L W
 S A V SKY DIAMOND 2852

BW
ADJ WW
ADJ YW

HB	GM	CD	BW	WW	YW	MK	HPG	CM	MB	YG	CW	RE

Due 1/24/16 to VCL Olympian

Black/Red Carrier

J6 Ms Emblynette B428 represents some of the most celebrated genetics in the red and black industry. Years and years of selective breeding have resulted into this female that can offer new and exciting blood to the future of Red Angus. Stacks of generational superiority lie within this female, and she is one of the great ones to sell. Untold opportunities are a part of the future progeny from this great cow prospect. She sells bred for a SimAngus calf.

LOT 31



31

J6 MS. ST RENEE B488

100% AR - 3/10/2014 - 1679941 - J6RA B488 - Cat: A

WHITESTONE CAYENNE 423R
MAJESTIC LIGHTNING 717 SGMR
 WHITESTONE BLOCKANNA R227

LCHMN GRANDCANYON 1244G
 FEDDES BLOCKANNA 807
 WHITESTONE SIZABULL M131
 BLOCKANA 0143 OF WSRA
 UBAR DIVIDE 121
 BJR BONNIE BELL 232-075
 HOLDEN HIGH OCTANE 920
 LMB ST RENEE 843

UBAR RED DIVIDE 331
UBAR ST RENEE 704
 UBAR ST. RENEE 266

BW
78
ADJ WW
640
ADJ YW

HB	GM	CD	BW	WW	YW	MK	HPG	CM	MB	YG	CW	RE
52	46	-5	4.3	70	102	13	9	-1	0.24	0.04	36	-0.04

Due 2/13/16 to Six Mile & Co Jagger 780A

J6 Ms. St Renee B488 is a standout female by the triple crown champion sire, Majestic Lightning 717. The exceptional breeding bull is an important part of the pedigrees of this J6 offering, and the females that are sired by this excellent sire represent some of the freshest genetics available to the industry. The female is from a worthy and resourceful breeding female in the J6 herd, and she has been an anchor to many of the lines that are represented in the cow herd. Deep within the pedigree of this female, both top side and bottom side, lies some of the most dedicated performance blood in the seedstock industry.

LOT 32



32

MAJESTIC BLOCKANA B26

100% AR - 3/24/2014 - 1682516 - TMMR B26 - Cat: A

WHITESTONE CAYENNE 423R
MAJESTIC LIGHTNING 717 SGMR
 WHITESTONE BLOCKANNA R227

LCHMN GRANDCANYON 1244G
 FEDDES BLOCKANNA 807
 WHITESTONE SIZABULL M131
 BLOCKANA 0143 OF WSRA
 BFCK CHEROKEE CNYN 4912
 SUNR GRAND TILLY 006
 5L NORSEMAN KING 2291
 FEDDES BLOCKANA 495

SUNR GRAND CHEROKEE 909N
FEDDES BLOCKANA X58
 FEDDES BLOCKANA 882

BW
75
ADJ WW
768
ADJ YW

HB	GM	CD	BW	WW	YW	MK	HPG	CM	MB	YG	CW	RE
59	49	-1	0.7	67	103	23	11	1	0.21	-0.06	32	0.45

PE'd 4/15/16 to 6/30/15 to Majestic Game On A116

Majestic Blockana B26 is one of the most exceptional lots in the offering. The pedigree, EPDs and phenotype are all harmonized in this excellent breeding female. She is one of the top breeding females in this sale, and she represents many of the breed's most exceptional individuals that have propelled the industry to the level it is today. Her dam is one of the excellent young donor females now in the J6 cow herd. Feddes Blockana X58 has emerged as one of the great young females from this storied line of abundantly milking females. Her great EPD numbers coupled with her overpowering phenotype make this yet another of the great ones available through this sale of excellent seedstock.

MAJESTIC LIGHTNING 717

SIRE OF LOTS 31-34



33

MAJESTIC PEEK A BOO B113

100% AR - 2/4/2014 - 1733141 - SGMR B113 - Cat: A

WHITESTONE CAYENNE 423R
MAJESTIC LIGHTNING 717 SGMR
 WHITESTONE BLOCKANNA R227

SLGN SOLUTION 66S
SLGN PEEKS
 MEADO-WEST PEEK-A-BOO

LCHMN GRANDCANYON 1244G
 FEDDES BLOCKANNA 807
 WHITESTONE SIZABULL M131
 BLOCKANA 0143 OF WSRA
 LCC CHEYENNE B221L
 FEDDES BLOCKANNA 807
 MEADO-WEST JAZZ
 MEADO-WEST LAVONNE 110L

BW
78
ADJ WW
665
ADJ YW

HB	GM	CD	BW	WW	YW	MK	HPG	CM	MB	YG	CW	RE
70	48	-3	2.5	69	107	19	10	3	0.31	0.08	37	0.01

PE'd 4/15/16 to 6/30/16 to Majestic Game On A116

Majestic Peek A Boo B113 is a unique and inspiring genetic piece, and she sells as a powerful breeding female for the future. She is one of the stand out females from the entire Peek A Boo lineage that has been made popular through the Solution Genetics program. Pages and pages and volumes and volumes can be written into the breed's history with this storied line. Few lines of any breed can match the accomplishments of this cow family. SLGN Peeks was purchased as a calf for the Majestic Meadows program. She has fulfilled her expectations as a donor female, and daughters by Lazy MC Cowboy Cut have been among the most competitive from this donor female. This line bred female to Feddes Blockanna 807 on the top and bottom sides make this an extraordinary opportunity to obtain no-where-else seedstock of extraordinary potential and valu

LSF REBELLA R5008 U8245

DAM OF LOT 34



34

MAJESTIC REBELLA B107

100% AR - 2/2/2014 - 1683015 - TMMR B107 - Cat: A

WHITESTONE CAYENNE 423R
MAJESTIC LIGHTNING 717 SGMR
 WHITESTONE BLOCKANNA R227

FEDDES BIG SKY R9
LSF REBELLA R5008 U8245
 LSF REBELLA 102-502 R5008

LCHMN GRANDCANYON 1244G
 FEDDES BLOCKANNA 807
 WHITESTONE SIZABULL M131
 BLOCKANA 0143 OF WSRA
 BIEBER MAKE MIMI 7249
 FEDDES LAKINA 310
 LSF COMBINATION A301M
 RSLND REBELLA 102-502

BW
83
ADJ WW
606
ADJ YW

HB	GM	CD	BW	WW	YW	MK	HPG	CM	MB	YG	CW	RE
84	50	-3	1.3	74	118	21	17	2	0.51	0.19	42	0.17

PE'd 4/15/16 to 6/30/16 to Majestic Game On A116

Majestic Rebella B107 is one of the stand out females in the industry. She represents some of the most time-honored genetics ever generated in the Red Angus industry. The female is from an ET mating of the triple crown champion bull, Majestic Lightning 717 and the stupendous donor female LSF Rebella R5008 U8245, that sells as Lot 42. One of the most exciting genetic forces in the industry lies with this female and her awesome genetically advanced donor dam. This female is the most perfected version of the KRN Reba's Robin cow family that reaches deeply within this female's pedigree. Hundreds of thousands of progeny have been generated from this extraordinary family that includes some of the greatest herd sires and donor females in the industry. The breed is in good hands with great young females from prolific foundation genetics such as the ones outlined here.

LOT 35



35

MAJESTIC BRIDGET B12

100% AR - 2/18/2014 - 1683893 - TMMR B12 - Cat: A

WHITESTONE CAYENNE 423R
MAJESTIC LIGHTNING 717 SGMR
 WHITESTONE BLOCKANNA R227

FCC RAMBO 502
BHC MISS BRIDGET
 BHC BRIDGET

LCHMN GRANDCANYON 1244G
 FEDDES BLOCKANNA 807
 WHITESTONE SIZABULL M131
 BLOCKANNA 0143 OF WSRA
 CV FOUR TIMES
 COPPER LASS 2392
 BHC STRYKER
 RN-AMBER-083

BW
75
ADJ WW
620
ADJ YW

HB	GM	CD	BW	WW	YW	MK	HPG	CM	MB	YG	CW	RE
43	46	-3	1.3	52	82	13	7	5	0.13	0.14	21	-0.23

PE'd 4/15/16 to 6/30/16 to Majestic Game On A116

Majestic Bridget B12 is one of the great daughters of Majestic Lightning 717. She reaches genetically to BHC Stryker, one of the most highly used Red Angus sires worldwild. His influence has been highly utilized throughout South America, and he is one of the great ones bred by Charlotte and Howard Bobbitt, at their Rocky Hill Farm. The BHC Miss Bridget cow family has been perfected over time in the Majestic Meadows herd, and now, is passed to the excellent J6 herd for further enhancement. This female represents the heritage of the breed in its finest hour.

LOT 36



36

MAJESTIC BLOCKANA B08

100% AR - 2/7/2014 - 1676953 - SGMR B08 - Cat: A

RED COMPASS MULBERRY 449M
RED FINE LINE MULBERRY 26P
 RED DUS FAYETTE 8G

MAJESTIC LIGHTNING 717 SGMR
MAJESTIC BLOCKANA X15
 FEDDES BLOCKANA 880

RED HR RAMBO ET 91K
 RED BRYLOR MISS ROC 20H
 SILVEIRAS REDFORD
 RED MC DOUGALL FAYETTE 59A
 WHITESTONE CAYENNE 423R
 WHITESTONE BLOCKANNA R227
 GLACIER DIVIDE 310
 FED'S BLOCKANA 4231

BW
82
ADJ WW
681
ADJ YW

HB	GM	CD	BW	WW	YW	MK	HPG	CM	MB	YG	CW	RE
109	48	-2	0.7	62	99	16	11	7	0.21	0.09	31	0.11

PE'd 4/15/16 to 6/30/16 to Majestic Game On A116

Majestic Blockana B08 represents some of the most extensive genetic opportunities with this over powering daughter of Red Fine Mulberry 26P. With this bred female, the merging of the most stabilized genetics in the breed are offered. Extensive embryo transplantation has resulted into the most renowned blood in the breed that can be found with the pedigree of this extraordinary breeding female. Yet even greater advancement is offered with this female, and the bred heifer can fill the bill if looking for a futuristic breeding piece for expansion of the breed.

MAJESTIC GAME ON A116
SERVICE SIRE



37 MAJESTIC LIGHTNINGBUG B41

100% AR - 5/28/2014 - 1692117 - SGMR B41 - Cat: A

PERKS ADVANCER 9088
MAJESTIC BURN BARRELL Y720
MS CHATEAU OF 4L R221

WHITESTONE CAYENNE 423R
MAJESTIC LIGHTNINGBUG X44
WHITESTONE BLOCKANNA R227

RBJR ADVANCE A709
HMV MS RAMBO 502
GLACIER CHATEAU 744
4L MS RAMBO R710
LCHMN GRANDCANYON 1244G
FEDDES BLOCKANNA 807
WHITESTONE SIZABULL M131
BLOCKANA 0143 OF WSRA

BW
78
ADJ WW
ADJ YW

HB	GM	CD	BW	WW	YW	MK	HPG	CM	MB	YG	CW	RE
70	49	0	1.1	70	108	20	7	4	0.42	0.12	36	0.05

PE'd 4/15/16 to 6/30/16 to Majestic Game On A116

Majestic Lightningbug B41 is from Majestic Lightningbug X44, the only red full sister of Majestic Lightning 717. The dam is now a part of the donor arsenal in place at J6 Farms. This exceptional donor cow family offers unique opportunities to the breed and industry. Decades of performance and lineage are available through the genetic lines offered here. Her sire, Majestic Burn Barrell Y720, is a dominant breeding sire that is in the Haycow Cattle Ranch in Lincoln, California. Impressive combination genetics are available through this spectacular young breeding female.

OHRR 63G ADV MAHOGANY 56N
DAM OF LOT 38



38 MAJESTIC MAHOGANY B40

100% AR - 5/30/2014 - 1683892 - TMMR B40 - Cat: A

BUF CRK HOBO 1961
3 ACES SIDEWAYS
TROWBRIDGE LANA 707

RBJR ADVANCE A709
OHRR 63G ADV MAHOGANY 56N
OHRR MS MAHOGANY 63G

BUF CRK HOBO 1413
BUF CRK CARRIE VC1174
J BAR 7 GRAND CANYON 2222
LANA GAL N78
T3 CHIEF 2887
ROY ADVANCE A209
RBRTS MCINTOSH II 344
JVD MAHOGANY 508

BW
78
ADJ WW
ADJ YW

HB	GM	CD	BW	WW	YW	MK	HPG	CM	MB	YG	CW	RE
80	47	1	1.8	64	97	11	9	6	0.22	0.12	30	-0.21

PE'd 4/15/16 to 6/30/16 to Majestic Game On A116

Majestic Mahogany B40 is the most advanced version of the highly respected Mahogany line of females from the OHR Angus program of Edward Olson's. The Mahogany cow family has added immense breed enhancement through this spectacular line of females. Her dam is now a part of the J6 breeding herd, and this daughter of the Denver champion bull, 3 Aces Sideways, is offered as yet another superior breeding female. Years of generational turnover are offered here through this exceptional breeding female.

BJR WINDSONG 2269
DAM OF LOT 39



39 MAJESTIC WINDSONG B35

100% AR - 4/15/2014 - Applied For - TMMR B35 - Cat: A

WHITESTONE CAYENNE 423R
MAJESTIC LIGHTNING 717 SGMR
WHITESTONE BLOCKANNA R227

RED BRYLOR NEW TREND 22
BJR WINDSONG 2269
SODAK WINDSONG 7030

LCHMN GRANDCANYON 1244G
FEDDES BLOCKANNA 807
WHITESTONE SIZABULL M131
BLOCKANA 0143 OF WSRA
SSS BLACK TREND 13B
MEADOW CK MS SEAMN 31A
SODAK OSCAR 4386
SODAK RAIN DANCER 2068

BW
78
ADJ WW
ADJ YW

HB	GM	CD	BW	WW	YW	MK	HPG	CM	MB	YG	CW	RE
		-3	2.1	73	112	21	12	0	0.29	0.07	40	0.04

PE'd 4/15/16 to 6/30/16 to Majestic Game On A116

Majestic Windsong B35 is one of the good daughters of Majestic Lightning 717. She descends from the storied BJR Windsong 2269 cow family that has become one of the familiar and appreciated family lines in the breed. Some of the most impressive EPDs in the catalog belong to this excellent breeding female. The balance and genetic worthiness of this tremendous female are richly displayed through the pedigree and EPD tabulation outlined in this lot. Her dam, deceased, was one of the most prolific females of her time, and this bred heifer carries forth the many generations of excellence that are noted in the pedigree.

LOT 40



40

RAISLAND LAKOTA 922-650

100% AR - 2/11/2009 - 1308829 - KRN 922 - Cat: A

BECKTON LANCER T A664
BECKTON LANCER F442 T
 BKT SUFFEINA A828 DM

 LCC CHEROKEE CNYN A201M
RAISLAND LAKOTA 650-541
 CFLD LAKOTA 220-541

BECKTON LANCER 9380
 BECKTON COCA 9119 TJ
 BECKTON DOMINOR 9455
 BKT SUFFEINA 9493 TT
 BFCK CHEROKEE CNYN 4912
 LCC PRINCESS K1275
 CFLD EBV 709-311
 CFLD LAKOTA 927-220

BW
82
ADJ WW
602
ADJ YW

Due 1/10/16 to Majestic Lion Heart A25

Raisland Lakota 922-650 is one of the most noted donor females in the breed. This female should be staying at J6, but a daughter will take her place. Raisland Lakota 922-650 has excelled in every aspect of genetic multiplication, and the female is offered in the absolute apex of her donor career. She is from the famed Lakota cow family that has emerged, over time, as a substantial source of the breed's most dependable blood. The perfectly designed female with extraordinary feet and udder attachment make her a superlative donor female. She has stood the test of time, and her progeny have paced the industry when mated to some of the most noted herd sires of the day. This female exudes the proud family lineage that offers breeders to obtain the factory for progeny that can become one step next to perfection. This is a true donor female of international intrigue and potential.

HB	GM	CD	BW	WW	YW	MK	HPG	CM	MB	YG	CW	RE
86	48	4	-0.6	49	70	19	7	0	0.40	-0.15	10	0.38

LOT 41



41

WHITESTONE SERABELLE W118

100% AR - 1/20/2007 - 1159206 - WSRA W118 - Cat: A

LEACHMAN COWBOSS 1129G
LCC VAQUERO 1412J
 PARK MISS WIDELOAD F648

BJR MONU 4X-303
WHITESTONE SERABELLE R080
 WSRA SERABELLE 505N

LMAN ROBIN HOOD 1174B
 LMAN ABIGAIL B1174
 LCHMN WIDE LOAD 1061C
 PARK MERCEDES C235
 RED SSS MONU4X 237C
 RCRA SAMANTHA
 HOLDEN HI HO 574
 LMAN SERABELLE 9283

BW
83
ADJ WW
743
ADJ YW
1,067

HB	GM	CD	BW	WW	YW	MK	HPG	CM	MB	YG	CW	RE
92	49	1	0.6	67	114	5	8	6	0.10	0.12	39	-0.17

Due 1/21/16 to Majestic Lion Heart A25

Whitestone Serabelle W118 has been a long-standing donor female at Majestic Meadows, and yes, she is offered as one of the most extraordinary females to sell this year within the Red Angus breed. She came to Majestic Meadows as a pick of the heifer calves at Whitestone Farm. The Serabelle lineage is excitingly represented with this prominent breeding piece that has infused much excitement throughout the industry. Her Daughters are among the highest valued calves in the history of Majestic Meadows. Females of national importance reside with the Bloome Family in Iowa and at the Chain Ranch in Oklahoma. Her genetic amplitude has spiraled through some of the leading firms today, and a female of this importance is excitingly offered for sale through this spectacular sale offering. A son, Majestic Wolf Pack, is adding performance to calf crops throughout the country. Here she is—an individual for the most quality-oriented purchaser.

LOT 42



42

LSF REBELLA R5008 U8245

100% AR - 1/27/2008 - 1248586 - LJRA U8245 - Cat: A

BIEBER MAKE MIMI 7249
FEDDES BIG SKY R9
 FEDDES LAKINA 310

LSF COMBINATION A301M
LSF REBELLA 102-502 R5008
 RSLND REBELLA 102-502

BJR MAKE MY DAY 981
 BIEBER SIRENA 6708
 LCHMN GRANDCANYON 1244G
 FEDDES LAKINA 954
 LCHMN TOP BRASS 1049H
 WHF LASS 27G-29J
 BFCK CHEROKEE CNYN 4912
 KRN REBA'S ROBIN

BW
65
ADJ WW
586
ADJ YW
919

HB	GM	CD	BW	WW	YW	MK	HPG	CM	MB	YG	CW	RE
104	51	2	-2.5	65	96	16	17	1	0.82	0.06	23	0.43

AI'd 12/7/14 to Majestic Lightning 717 SGMR
 PE'd to Majestic Game On A116

LSF Rebella R5008 U8245 is one of the best female anchors in the industry, and the female is offered as a rich source of the most proven and foundation genetics available in the breed. LSF Rebella R5008 U8245 was bred in the Ludvigson Stock Farms expansive breeding program, and her influence has assisted in catapulting the Majestic Meadows breeding program into one of the highest regarding herds in the country, and now, all reside in Nebraska in the J6 breeding herd. This marvelously structured and conformed donor female has exceptional EPD ranking, and she has the bred-in ability to move a breeding program to an even more advanced status within the industry. She traces two generations to the immortal KRN Reba's Robin female that has become synonymous with the entire industry world-wide. Millions of progeny, through sons, daughters, embryo transfer, artificial insemination and natural mating -trace to KRN Reba's Rambo. Of all her descendants, one of her most noted accomplishments is offered here as this magnificent donor lot.

LOT 43



43

J6 PRIMROSE A619

100% AR - 11/4/2013 - 3466556 - J6RA A619 - Cat: A

RED BAR-E-L RIBEYE 103R
RED COCKBURN RIBEYE 308U
 RED WILBAR CORA 443P

NBAR SEQUOIA P429
NBAR PRIMROSE S619
 NBAR PRIMROSE L47

RED TER-RON DIGGER 11L
 RED BAR-E-L MARCIE 50N
 RED TER-RON TORNADO 157M
 RED HEAD CORA 159L
 UBAR SEQUOIA 202
 NBAR BERRY 729
 NBAR BO-DIDLY
 RBRTS PRIMROSE 31B

BW
78
ADJ WW
517
ADJ YW
1,380

HB	GM	CD	BW	WW	YW	MK	HPG	CM	MB	YG	CW	RE
90	48	2	0.5	60	93	19	8	6	0.25	0.08	26	-0.05

Due 1/24/16 to Six Mile & Co Jagger 780A

J6 Primrose A619 is one of the excellent daughters of Red Cockburn Ribeye 308U. The female is one of the leading females of the Primrose family that has been one of the important lines throughout the breed. The young female has the potential of being a superior donor female from start to finish, and she sells as the best from the entire cow family. The female offers the blood of this cow line that has been highly productive in the past. She has absolutely phenomenal performance, and her EPD tabulation is balanced.

LOT 44



44

HVR VERDALE 080

100% AR - 9/28/2010 - 1408394 - HVR 080 - Cat: A

MLK CRK CUB 722
WEBR DOC HOLLIDAY 2N
 WEBR MS DOLLY 1L

OHRR DAKOTA COPPER 29K
HVR 666
 GLACIER VERDALE 361

GLACIER CUB 446
 MLK CRK LAKOTA 152-HOBO
 BADLANDS MR BEEF 805
 LMAN SELMA 9192
 LCHMAN COPPER ROB 1204D
 MESSMER OPHELIA 9502
 GLACIER DYNARISE
 GLACIER PF 904

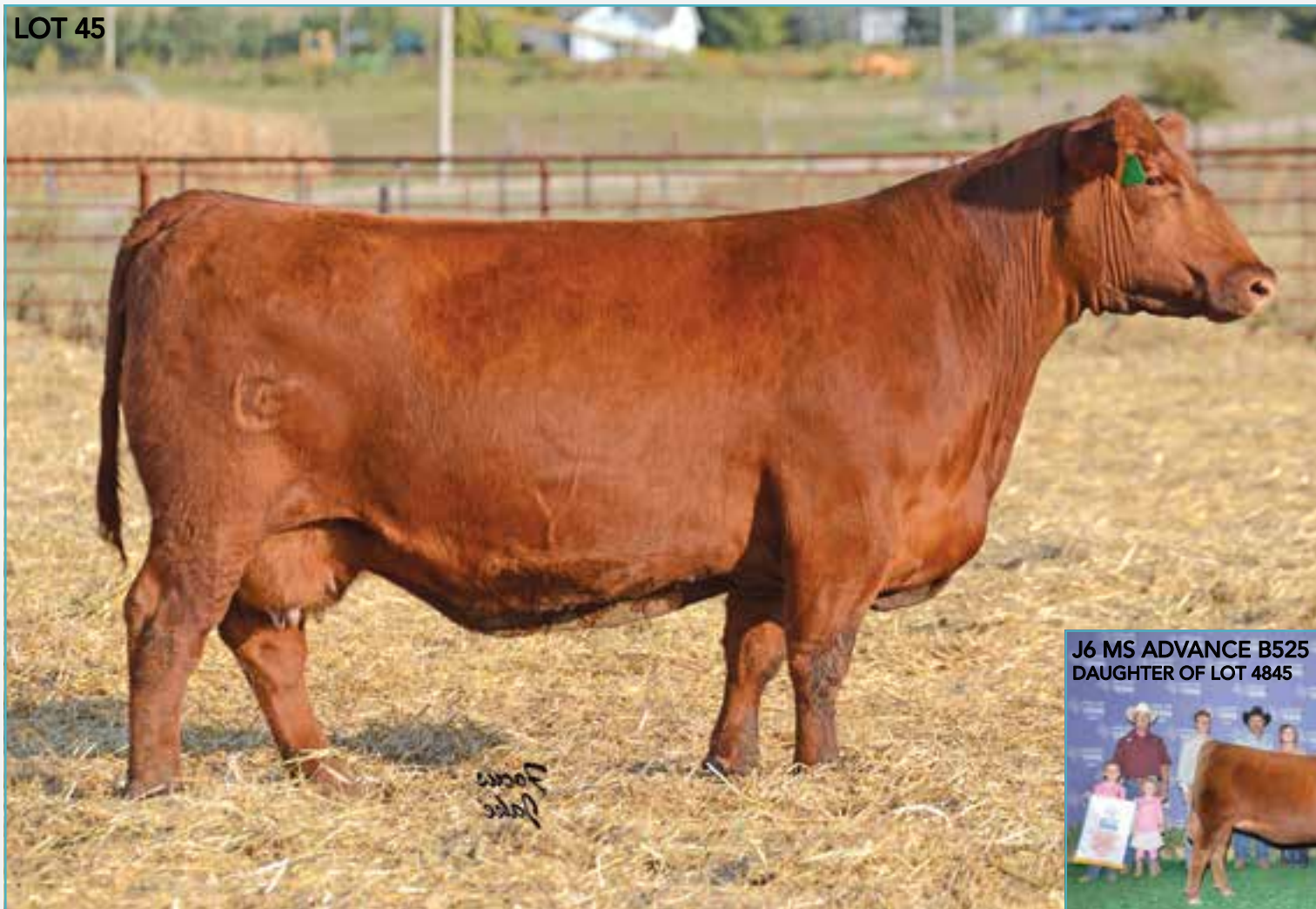
BW
79
ADJ WW
640
ADJ YW

HB	GM	CD	BW	WW	YW	MK	HPG	CM	MB	YG	CW	RE
79	48	-1	-2.4	54	76	22	11	9	0.40	0.08	11	-0.06

Due 2/1/16 to Six Mile & Co Jagger 780A

HVR Verdale 080 is the 5-year-old female sired by WEBR Doc Holliday 2N. The female has an excellently balanced EPD ranking, and she has an impressive milk number of 22. She is one of the attractive and thickly constructed females of the highest quality and breed character. She represents some of the finest genetics available in the cow herd at J6. She will have a Jagger calf early next year.

LOT 45



J6 MS ADVANCE B525
DAUGHTER OF LOT 4845

45

JKC BERRY ADVANCE 36W

100% AR - 3/3/2009 - 1304363 - JKC 36W - Cat: A

RED COMPASS MULBERRY 449M
RED FINE LINE MULBERRY 26P
RED DUS FAYETTE 8G

PERKS ADVANCER 9088
MS ADVANCER OF 4L R230
4L MS BRKN DIVIDE R935

RED HR RAMBO ET 91K
RED BRYLOR MISS ROC 20H
SILVEIRAS REDFORD
RED MC DOUGALL FAYETTE 59A
RBJR ADVANCE A709
HNV MS RAMBO 502
4L BREAKN THE DIVIDE
4L MS RAMBO R713

BW
98
ADJ WW
573
ADJ YW

HB	GM	CD	BW	WW	YW	MK	HPG	CM	MB	YG	CW	RE
120	49	-3	2.0	77	119	13	12	9	0.23	0.05	44	0.18

Sells Open & Ready for Transplant

Selling an embryo flush to the bull of buyer's choice. Guaranteeing 6 embryos

JCK Berry Advance 36W is one of the powerful donor females in the J6 arsenal of high-achieving Red Angus females. The wickedly productive female has produced some of the great young progeny in the breeding herd, and she is extraordinarily accomplished for her relatively short career at J6. The daughter of Red Fine Line Mulberry 26P from a daughter of Perks Advancer 9088 has become one of the breed leading donor females for the continued perfection of the breed.

Many of the breed's best Red Angus females reside at J6 Farms, and the genetics from this great donor female are among the most coveted. Her pedigree and EPD tabulation make for a phenomenal breeding opportunity to obtain embryos from this great proven cow.

The Birkhead family of Texas has been having tremendous success campaigning a daughter of hers, J6 Ms Advance B525.

LOT 46



46

RED JSTN ELORA 0495

100% AR - 6/20/2010 - 1416240 - JSTN 495X - Cat: A

RED COMPASS MULBERRY 449M
RED FINE LINE MULBERRY 26P
 RED DUS FAYETTE 8G

RED TER-RON MAMBO 28K
RED JSTN ELORA 12M
 RED JCC ELORA 29G

RED HR RAMBO ET 91K
 RED BRYLOR MISS ROC 20H
 SILVEIRAS REDFORD
 RED MC DOUGALL FAYETTE 59A
 RED YY RED KNIGHT 640F
 RED ALDER ABG STAR DUST 8G
 RED PIPESTONE DRESDEN 3D
 RED CUTARM ELORA 824Z

BW
70
ADJ WW
752
ADJ YW

HB	GM	CD	BW	WW	YW	MK	HPG	CM	MB	YG	CW	RE
165	49	1	-0.4	65	102	10	13	7	0.41	0.10	30	0.05

Due 1/24/16 to J6 Mr. Van B454

Red JSTN Elora 0495 is one the impressive mature females in the offering, and she stems from some of the strongest of Canadian performance lines. The daughter of Red Fine Mulberry 26P is a solidly exceptional female with the majority of her life in front of her. She has the ability to build an entire noteworthy family line. The lineage represented here is some of the most influential in the breed, and her dam is sired by Red Ter-Ron Mambo 28K, some of the highest performing genetics from the Ter-Ron herd. Years of cow family improvement is noted within the pedigree of this young cow. She is one of the most impressive looking females in the entire auction inventory. She sells bred to J6 Mr. Van B454 who is a full-sib to J6 Mr. Winkle who sold in our 2015 bull sale, as well as a full-sib to Lot 19 in this offering.

LOT 47



47

RED JSTN LISA 7901

100% AR - 2/1/2007 - 1416642 - JSTN 901T - Cat: A

RED YY RED KNIGHT 640F
RED TER-RON MAMBO 28K
 RED ALDER ABG STAR DUST 8G

RED JCC FREEDOM 82L
RED JSTN LISA 36N
 RED LISA'S HI HO

RED YY 23L TOPPER 408D
 RED TOP GOLDIE 40U
 RED SSS BOOM TOWN 260D
 RED BRA STAR DUST 8B
 RED SSS BOMBER 907G
 RED JCC YONSOTTU 38F
 HOLDEN HI HO 7151
 RED LISA FL PTEET

BW
90
ADJ WW
613
ADJ YW

HB	GM	CD	BW	WW	YW	MK	HPG	CM	MB	YG	CW	RE
104	47	-1	2.4	61	91	2	7	4	0.33	0.00	28	0.01

Due 1/1/16 to Red Soo Line Power Eye 161X

Red JSTN Lisa 7901 is one of the productive members of the J6 cow herd. The Red Ter-Ron Mambo 28K daughter has a nice production record at J6, and she is one of the performance oriented females. She is a great female for bull production, and she will have a great calf by Red Soo Line Power Eye 161X. This female comes from the depth of the program, and she is offered as an option for the most particular breeder.

LOT 48



J6RA BADA BING 1602B
DAUGHTER OF LOT 48



J6RA MS RACHEL 712B
DAUGHTER OF LOT 48



SELLING CHOICE OF EMBRYOS

You can purchase six of one or mix and match three of each.

48a

6 EMBRYOS

1/2 SM 1/2 AR

SVF STEEL FORCE S701 LEACHMAN SAUGAHATCHEE 3000C
MR HOC BROKER GF EVENING TINGE 1X
JM BF H25 JL EVENING TINGE 8001

CE	BW	WW	YW	Milk	Doc	CW	YG	Marb	BF	RE	API	TI
4	2.9	60	88	16		26	-0.16	-0.08	-0.06	0.48	76	52

48b

6 EMBRYOS

1/2 SM 1/2 AR

MR NLC UPGRADE U8676 LEACHMAN SAUGAHATCHEE 3000C
MR TR HAMMER 308A ET GF EVENING TINGE 1X
SVF/HS EXPECTING A DREAM JL EVENING TINGE 8001

CE	BW	WW	YW	Milk	Doc	CW	YG	Marb	BF	RE	API	TI
9	1.7	62	93	20		27	-0.23	0.22	-0.03	0.68	109	64

48

GF EVENING TINGE 1X

Angus - 1/16/2010 - 16768684 - GFA 1X

N BAR EMULATION EXT
LEACHMAN SAUGAHATCHEE 3000C
LEACHMAN B C 7100

JUSTAMERE 253 BADA BING 406S
JL EVENING TINGE 8001
HF EVENING TINGE 57R

EMULATION N BAR 5522
N BAR PRIMROSE 2424
RITO 2100 G D A R
CANYON COLOSSAL QUEEN 0727
EXAR MASTER 253
REMITALL KEEPSAKE 143L
HF FREE WHEELER 191N
HF EVENING TINGE 68H

BW
ADJ WW
ADJ YW

CED	BW	WW	YW	SC	DOC	HP	CEM	Milk	CW	Marb	RE	\$B
7	3.0	41	77	.74	3	3.1	7	24	26	-.10	.44	77.45

Open & Ready To Transplant

Selling is the right to flush 1X to the bull of buyer's choice.

As a division champion at the 2011 National Western Stock Show and grand champion at the 2011 American Royal, her overall design, structure and athletic movement speak for themselves. After her stellar show career, she has made a name for herself as a donor female of unparalleled accomplishment. Royally bred, perfectly constructed and a proven producer of superior seedstock, GF Evening Tinge is truly in a league of her own. The producing ability is second-to-none in this female. She's definitely one of those can't-miss females; breed her however and watch the results blossom.

Her daughter, J6RA Ms Rachel 712B, sold for \$120,000 and is a stellar heifer. Another daughter, J6RA Bada Bing 1602B, sold to the Effling family in South Dakota was just crowned the 2015 American Royal Grand Champion Female.

LOT 49



Focus Jake



WR MS PORCHE 0030

49

J6RA MS MECAN C706

1/2 SM 1/2 AR - 3/24/2015 - 2996840 - C706 - Black - Polled

CNS DREAM ON L186
WS PILGRIM H182U
 WS MARLA 276M

NBAR HAMLEY S913
WR MS PORCHE 0030
 GT CITA 4060

NICHOLS LEGACY G151
 CNS SHEEZA DREAM K107W
 ELLINGSON BLACKPERFECTOR
 GW MISS PASQUE 651F
 PIE BILLINGS 487
 NBAR KELLY 913
 CITATION 138
 JMDF MISS LANA

BW
82
ADJ WW
ADJ YW

CE	BW	WW	YW	Milk	DOC	CW	YG	Marb	BF	RE	API	TI
11	1.2	61	84	21	10	22	-0.05	0.48	-0.012	0.19	131	70

Open Heifer

Porche strikes again. What a flashy functional package this heifer puts together. She combines muscle and body into a unique package that will not only earn her keep in the show ring, but given her maternal values, she will be a standout in the donor pen as well. Structurally, this female has what it takes to change a program.

LOT 50



50

J6RA MS BLACKWATCH C702

1/2 SM 1/2 AN - 4/2/2015 - 3013863 - C702 - Black - Polled

CNS DREAM ON L186
WS PILGRIM H182U
 WS MARLA 276M

NICHOLS LEGACY G151
 CNS SHEEZA DREAM K107W
 ELLINGSON BLACKPERFECTOR
 GW MISS PASQUE 651F

BW
79
ADJ WW
ADJ YW

718Y

CE	BW	WW	YW	Milk	DOC	CW	YG	Marb	BF	RE	API	TI

Open Heifer

If you love a huge belly and great front end, this female is for you. It's hard to believe how a female can be in light condition yet still be so soggy. We absolutely love the hip and hind leg structure on this Blackwatch daughter, especially when she gets out and moves. To top it off, she is a full sister to Adcock's percentage Simmental that has quite the fan base and banner collection. The proof is in the pudding.

LOT 51



51

J6RA MS EVERGREEN C703

1/2 SM 1/2 AN - 4/1/2015 - 3013865 - C703 - Black - Polled

CNS DREAM ON L186
WS PILGRIM H182U
 WS MARLA 276M

NICHOLS LEGACY G151
 CNS SHEEZA DREAM K107W
 ELLINGSON BLACKPERFECTOR
 GW MISS PASQUE 651F

LIMESTONE DARKHORSE U322
CONLEY EVERGREEN 012
 WWC EVERGREEN 713

BC 7022 RAVEN 7965
 PAF TRIDGE 5768
 TC GRIDIRON 258
 SANDPOINT WAR EVERGREEN 3023

BW
78
ADJ WW
ADJ YW

CE	BW	WW	YW	Milk	DOC	CW	YG	Marb	BF	RE	API	TI
10	1.2	64	101	20	11	32	-0.12	0.67	-0.005	0.60	140	77

Open Heifer

Watch out for this one as a senior yearling. She has flawless structure with all the right angles and dimensions, and will exceed expectations with time and feed. Her genetics go back to the great Conley Evergreen cow who has produced the right kind of females time and time again. This heifer has the potential to do great things throughout her life and be a cornerstone to any program.

LOT 52



52

J6RA MS CAYENNE C701

1/2 SM 1/2 AR - 4/1/2015 - 2996839 - C701 - Red - Polled

CNS DREAM ON L186
WS PILGRIM H182U
 WS MARLA 276M

NBAR HAMLEY S913
WR MS PORCHE 0030
 GT CITA 4060

NICHOLS LEGACY G151
 CNS SHEEZA DREAM K107W
 ELLINGSON BLACKPERFECTOR
 GW MISS PASQUE 651F
 PIE BILLINGS 487
 NBAR KELLY 913
 CITATION 138
 JMDF MISS LANA

BW
78
ADJ WW
ADJ YW

CE	BW	WW	YW	Milk	DOC	CW	YG	Marb	BF	RE	API	TI
11	1.2	61	84	21	10	22	-0.05	0.48	-0.012	0.19	131	70

Open Heifer

Here is a red beauty. This April heifer combines power and soundness in a maternal package that places her in elite company. She shows huge potential while she just keeps getting better by the day. Sound, soft, stout and square, with a good front end, Cayenne is the balanced package with a bow on top.

LOT 53



53

J6RA MS CAYMAN C711

1/2 SM 1/2 AR - 4/7/2015 - 2996843 - C711 - Red - Polled

WAGR DRIVER 706T
BROOKS RED ROCK Y950
 DOUBLE R EBONY P30

NBAR HAMLEY S913
WR MS PORCHE 0030
 GT CITA 4060

CNS DREAM ON L186
 3C MELODY M668 BZ
 WLE POWER STROKE
 NJC EBONY ANTOINETTE
 PIE BILLINGS 487
 NBAR KELLY 913
 CITATION 138
 JMDF MISS LANA

BW
85
ADJ WW
ADJ YW

CE	BW	WW	YW	Milk	DOC	CW	YG	Marb	BF	RE	API	TI
11	1.0	55	75	22	10	16	-0.18	0.29	-0.042	0.32	117	62

Open Heifer

This heifer is unique in her design. One of the most powerful females in the offering, she ties her power into a flawless structure, which is hard to find, in such a moderate package. Ms Cayman will be exciting to watch grow into a bull-producing powerhouse after she retires from a great show career. The unique features of this female will surely pay off in the pasture.

LOT 54A



LOT 54B



SELLING CHOICE...

54a

J6RA MS BOXSTER C707

1/2 SM 1/2 AR - 2/20/2015 - 2996841 - C707 - Black - Polled

CNS DREAM ON L186
WS PILGRIM H182U
 WS MARLA 276M

NBAR HAMLEY S913
WR MS PORCHE 0030
 GT CITA 4060

NICHOLS LEGACY G151
 CNS SHEEZA DREAM K107W
 ELLINGSON BLACKPERFECTOR
 GW MISS PASQUE 651F
 PIE BILLINGS 487
 NBAR KELLY 913
 CITATION 138
 JMDF MISS LANA

BW
85
ADJ WW
ADJ YW

CE	BW	WW	YW	Milk	DOC	CW	YG	Marb	BF	RE	API	TI
11	1.2	61	84	21	10	22	-0.05	0.48	-0.012	0.19	131	70

Open Heifer

54b

J6RA MS SPYDER C710

1/2 SM 1/2 AR - 3/3/2015 - 2996842 - C710 - Red - Polled

CNS DREAM ON L186
WS PILGRIM H182U
 WS MARLA 276M

NBAR HAMLEY S913
WR MS PORCHE 0030
 GT CITA 4060

NICHOLS LEGACY G151
 CNS SHEEZA DREAM K107W
 ELLINGSON BLACKPERFECTOR
 GW MISS PASQUE 651F
 PIE BILLINGS 487
 NBAR KELLY 913
 CITATION 138
 JMDF MISS LANA

BW
78
ADJ WW
ADJ YW

CE	BW	WW	YW	Milk	DOC	CW	YG	Marb	BF	RE	API	TI
11	1.2	61	84	21	10	22	-0.05	0.48	-0.012	0.19	131	70

Open Heifer

If you want to take your Simmental program to the next level, here is the answer. These two full sisters are powerhouses. Their extraordinary depth and rib shape is complemented by a smooth and elegant design from head to tail. To have the power these two Pilgrim daughters possess in combination with flawless structure, fresh condition, big feet, soft pasterns, and overall eye appeal is unique. We think enough of these two sisters that we can't let both go. Their sheer potential from the show ring to the donor pen is fun to imagine.

LOT 55



55

J6RA PORCHE C123

12/ SM 1/2 AR - 4/18/2015 - 3001984 - C123 - Black - Polled

CNS DREAM ON L186
WS PILGRIM H182U
 WS MARLA 276M

NBAR HAMLEY S913
WR MS PORCHE 0030
 GT CITA 4060

NICHOLS BLK DESTINY D12
 CNS SHEEZA DREAM K107W
 ELLINGSON BLACKPERFECTOR
 GW MISS PASQUE 651F
 PIE BILLINGS 487
 NBAR KELLY 913
 CITATION 138
 JMDF MISS LANA

BW
ADJ WW
ADJ YW

CE	BW	WW	YW	Milk	DOC	CW	YG	Marb	BF	RE	API	TI
11	1.2	61	84	21	10	22	-0.05	0.48	-0.012	0.19	131	70

Open Heifer

This female offers one of the most complete packages in the offering. She is green, however she shows the promise of a huge future. The Pilgrim x Porche mating has been a huge success and this female should produce just like her mother. This one is hard to poke a hole in and with time she should be a powerhouse. Study her hard, her potential is endless.

LOT 56



56

J6RA MS PORCHE C752

1/2 SM 1/2 AR - 2/19/2015 - 3000737 - C752 - Black - Polled

CNS DREAM ON L186
WS PILGRIM H182U
 WS MARLA 276M

NBAR HAMLEY S913
WR MS PORCHE 0030
 GT CITA 4060

NICHOLS LEGACY G151
 CNS SHEEZA DREAM K107W
 ELLINGSON BLACKPERFECTOR
 GW MISS PASQUE 651F
 PIE BILLINGS 487
 NBAR KELLY 913
 CITATION 138
 JMDF MISS LANA

BW
79
ADJ WW
ADJ YW

CE	BW	WW	YW	Milk	DOC	CW	YG	Marb	BF	RE	API	TI
11	1.2	61	84	21	10	22	-0.05	0.48	-0.012	0.19	131	70

Open Heifer

The true cow of the Pilgrim x Porche mating. We love the power and softness this heifer puts into such a sound package. Every angle of this female reads brood cow. If I could, I would have 500 of these running on grass. Don't pass over this excellent maternal prospect.

LOT 57



57

J6RA MS LADY C704

1/2 SM 1/2 AN - 4/1/2015 - 3013866 - C704 - Black - Polled

MR NLC UPGRADE U8676
MR TR HAMMER 308A ET
 SVF/HS EXPECTING A DREAM

B C MARATHON 7022
GAMBLES LADY 4079
 GAMBLES LADY 958

ELLINGSON LEGACY M229
 MS NLC MOJO S6119B B
 CNS DREAM ON L186
 SVF/NJC EXPECTATION N206
 O C C KIRBY 633K
 GIBBET HILL MIGNONNE E37
 FAMOUS 7001
 CHAMPION HILL LADY 703

BW
ADJ WW
ADJ YW

CE	BW	WW	YW	Milk	DOC	CW	YG	Marb	BF	RE	API	TI
8	1.9	69	107	18	11	36	-0.28	0.40	-0.055	0.78	116	73

Open Heifer

Who doesn't love a chrome baldy and this one is good. Hammer daughters have been rising to the top of sales all over the country. As the only Hammer daughter and the only baldy in our sale, she will stack up against the best. Super stout and sound with great eye appeal, she will gain recognition in the show ring and throw bulls that can change a cow herd. Don't let this one get away.

LOT 58



58

J6RA MS PANAMERA C712

1/2 SM 1/2 AR - 4/10/2015 - 2996844 - C712 - Red - Polled

CNS DREAM ON L186
WS PILGRIM H182U
 WS MARLA 276M

NBAR HAMLEY S913
WR MS PORCHE 0030
 GT CITA 4060

NICHOLS LEGACY G151
 CNS SHEEZA DREAM K107W
 ELLINGSON BLACKPERFECTOR
 GW MISS PASQUE 651F
 PIE BILLINGS 487
 NBAR KELLY 913
 CITATION 138
 JMDF MISS LANA

BW
81
ADJ WW
ADJ YW

CE	BW	WW	YW	Milk	DOC	CW	YG	Marb	BF	RE	API	TI
11	1.2	61	84	21	10	22	-0.05	0.48	-0.012	0.19	131	70

Open Heifer

Looking for the perfect red heifer for a new showman? This heifer is a sweetheart and we're not just talking about her attitude. She is a very sound, well-constructed female who has the same ability as her full sisters to improve a program. If you want to start a breeding program with a heifer that performs just as well in the ring as in the pasture this is a female you won't want to miss sale day.

LOT 59



59

J6RA MONA B205

1/2 SM 1/2 AR - 2/15/2015 - 3030183 - B205 - Black - Polled

CNS DREAM ON L186
WS PILGRIM H182U
 WS MARLA 276M

LEACHMAN SAUGAHATCHEE 3000C
P R MONA LISA 529
 MEADOWBROOK MS FULLBACK

NICHOLS LEGACY G151
 CNS SHEEZA DREAM K107W
 ELLINGSON BLACKPERFECTOR
 GW MISS PASQUE 651F
 N BAR EMULATION EXT
 LEACHMAN B C 7100
 RITO 9FB OF 5H11 FULLBACK
 MONALISA OF MEADOWBROOK

BW
76
ADJ WW
738
ADJ YW
1,207

CE	BW	WW	YW	Milk	DOC	CW	YG	Marb	BF	RE	API	TI
10	1.8	61	88	20	10	25	-0.06	0.28	0.018	0.53	116	64

Due 3/1/16 to a Broker son who is a full sib to J6RA Bada Bing 1602B, the Effling heifer who won the 2015 American Royal

We are kicking off the bred female section with a heifer we feel has a ton of real-word value. When you study her phenotype, you are in awe of how well she packages depth, dimension and structural integrity. She is simply flawless in her design. She's a soggy-made female who is bred to breed the good ones. She is soft in her pasterns and moves out freely. Her sire has proven he sires daughters cattlemen like and demand. Her dam has been a solid producer for us. You'll soon add J6RA Mona B205 to your donor pen. Her full sister sells as Lot 63.

LOT 60



LOT 61



60

J6RA DREAM DRIVER B305

3/4 SM 1/4 AN - 2/1/2014 - 3013610 - B305 - Black - Polled

NICHOLS LEGACY G151
CNS DREAM ON L186
 CNS SHEEZA DREAM K107W

WAGR DRIVER 706T
MS ROSIE DRIVER 735Y
 TRAVELER ROSE 301

NICHOLS BLK DESTINY D12
 NICHOLS DEBRA D81
 SRS FRANCHISE F601
 NICHOLS JOLIETTE 107W
 CNS DREAM ON L186
 3C MELODY M668 BZ
 T&S MR STOCK 365 8752
 MISS NORTHLANDER

BW
78
ADJ WW
ADJ YW

CE	BW	WW	YW	Milk	DOC	CW	YG	Marb	BF	RE	API	TI
13	1.0	57	78	14	10	17	-0.29	0.35	-0.040	0.68	137	70

Due 1/24/16 to VCL Olympian

61

J6RA DREAM ROSIE B 306

3/4 SM 1/4 AN - 2/10/2014 - 3013611 - B306 - Black - Polled

NICHOLS LEGACY G151
CNS DREAM ON L186
 CNS SHEEZA DREAM K107W

WAGR DRIVER 706T
MS ROSIE DRIVER 735Y
 TRAVELER ROSE 301

NICHOLS BLK DESTINY D12
 NICHOLS DEBRA D81
 SRS FRANCHISE F601
 NICHOLS JOLIETTE 107W
 CNS DREAM ON L186
 3C MELODY M668 BZ
 T&S MR STOCK 365 8752
 MISS NORTHLANDER

BW
79
ADJ WW
ADJ YW

CE	BW	WW	YW	Milk	DOC	CW	YG	Marb	BF	RE	API	TI
13	1.0	57	78	14	10	17	-0.29	0.35	-0.040	0.68	137	70

Due 2/16/16 to VCL Olympian

These two flushmate sisters are out of one of our tremendous producing cow. Ms Rosie Driver 735Y is a favorite of ours and is one of those can't-miss females. When mated to the famous Dream On sire, the results are spectacular as you can see by their photos. Dream On has been a mainstay in the Simmental industry. His calves are easy to market making them desirable to the most discriminating cattlemen. He breeds in calving-ease, phenotype and maternal strength. You can't go wrong with this pair of sisters. They will work nicely in any type of program.

LOT 62



62

J6RA MS ELBA B419

1/2 SM 1/2 AN - 1/20/2014 - 3013604 - B419 - Black - Polled

CNS DREAM ON L186
WS PILGRIM H182U
 WS MARLA 276M

NICHOLS LEGACY G151
 CNS SHEEZA DREAM K107W
 ELLINGSON BLACKPERFECTOR
 GW MISS PASQUE 651F

BW
72
ADJ WW
ADJ YW

5717 (REGISTERED ANGUS)

CE	BW	WW	YW	Milk	DOC	CW	YG	Marb	BF	RE	API	TI
9	2.1	66	90	20		26	-0.04	0.48	0.009	0.39	125	71

Due 2/10/15 to a Broker son

Check out this soggy, deep-bellied, free-moving daughter of the WS Pilgrim. Wow, J6RA Ms Ebla B419 stops everyone who has seen her. We love her look and the genetics behind her. She will make a tremendous brood cow you'll want to add to your donor pen. The look and math adds up in this breeding piece. Take a second look sale day and we think you'll agree.

LOT 63



63

J6RA LISA B110

1/2 SM 1/2 AR - 3/1/2014 - 3030183 - B110 - Black - Polled

CNS DREAM ON L186
WS PILGRIM H182U
 WS MARLA 276M

NICHOLS LEGACY G151
 CNS SHEEZA DREAM K107W
 ELLINGSON BLACKPERFECTOR
 GW MISS PASQUE 651F
 N BAR EMULATION EXT
 LEACHMAN B C 7100
 RITO 9FB OF 5H11 FULLBACK
 MONALISA OF MEADOWBROOK

BW
68
ADJ WW
ADJ YW

LEACHMAN SAUGAHATCHEE 3000C
P R MONA LISA 529
 MEADOWBROOK MS FULLBACK

CE	BW	WW	YW	Milk	DOC	CW	YG	Marb	BF	RE	API	TI
10	1.8	61	88	20	10	25	-0.06	0.28	0.018	0.53	116	64

Due 1/24/16 to VCL Olympian

Who wouldn't want to put this female in their herd? J6RA Lisa B110 is a deep-bodied female who tracks out smoothly. Her numbers are balanced, the phenotype is there and the calf she is carrying to the new and upcoming sire, VCL Olympian, only increases her value. You can't go wrong with this package.

LOT 64



64

J6RA BELLA B465

1/2 SM 1/2 AR - 3/9/2014 - 3013600 - B465 - Black - Polled

CNS DREAM ON L186
WS PILGRIM H182U
 WS MARLA 276M

NICHOLS LEGACY G151
 CNS SHEEZA DREAM K107W
 ELLINGSON BLACKPERFECTOR
 GW MISS PASQUE 651F

BW
72
ADJ WW
ADJ YW

8282 (REGISTERED ANGUS)

CE	BW	WW	YW	Milk	DOC	CW	YG	Marb	BF	RE	API	TI
11	0.7	67	91	17		24	-0.04	0.46	-0.001	0.31	129	72

Due 1/24/16 to VCL Olympian

We've said it already, but those Pilgrim daughters are the talk of the pen. He stamps them all with that broody look and a set of numbers cattleman can work with. Her dam is a registered Angus female that has been popular in the J6 herd. J6RA Bella B465 definitely is one who deserves a second look come sale day.

LOT 65



65

J6RA MS STING B466

1/2 SM 1/2 AN - 3/9/2014 - 3013582 - B466 - Black - Polled

CNS DREAM ON L186
WS PILGRIM H182U
 WS MARLA 276M

NICHOLS LEGACY G151
 CNS SHEEZA DREAM K107W
 ELLINGSON BLACKPERFECTOR
 GW MISS PASQUE 651F

BW
78
ADJ WW
ADJ YW

8281 (REGISTERED ANGUS)

CE	BW	WW	YW	Milk	DOC	CW	YG	Marb	BF	RE	API	TI
9	2.1	64	85	19		23	-0.05	0.48	0.009	0.39	123	70

Due 1/24/16 to VCL Olympian

Stop the presses. J6RA Ms Sting B466 is a stinger. Wow! Just look at her picture and see her sale day, and you'll fall in love with this long-bodied, structurally sound female. She, like several of the bred heifers, sell carrying the service of VCL Olympian, the hot new sire on the block, who has the look and balanced numbers to create explosive progeny breeders line up for.

LOT 66



66

J6RA MARLA B469

1/2 SM 1/2 AR - 3/9/2014 - 3013598 - B469 - Red - Polled

CNS DREAM ON L186
WS PILGRIM H182U
 WS MARLA 276M

NICHOLS LEGACY G151
 CNS SHEEZA DREAM K107W
 ELLINGSON BLACKPERFECTOR
 GW MISS PASQUE 651F

BW
71
ADJ WW
ADJ YW

209 (REGISTERED ANGUS)

CE	BW	WW	YW	Milk	DOC	CW	YG	Marb	BF	RE	API	TI
11	0.6	66	90	17		24	-0.05	0.46	-0.001	0.31	129	72

Due 1/24/16 to VCL Olympian

Those Pilgrim daughters are hard to pass up. They do so many thing right that a cowherd wouldn't be complete without one. J6RA Marla B469 is constructed nicely from the ground up. She has the look breeders like and the math to back it up.

LOT 67



67

J6RA MS. BARBARA B484

1/2 SM 1/2 AN - 2/1/2014 - 2886991 - B484 - Black - Polled

CNS DREAM ON L186
WS PILGRIM H182U
 WS MARLA 276M

NICHOLS LEGACY G151
 CNS SHEEZA DREAM K107W
 ELLINGSON BLACKPERFECTOR
 GW MISS PASQUE 651F

BW
79
ADJ WW
ADJ YW

9019 (REGISTERED ANGUS)

CE	BW	WW	YW	Milk	DOC	CW	YG	Marb	BF	RE	API	TI
9	1.6	58	74	19		16	-0.07	0.48	0.009	0.39	120	66

Due 2/1/16 to VCL Olympian

She may be last in the sale, because someone had to be. That doesn't take away from the functionality J6RA Ms. Barbara B484 will bring to a cowherd. This Pilgrim daughter back to a registered Angus dam is broody in her makeup and straight in her lines. Make sure you look her over sale day.

68

3 EMBRYOS

100% AR – Cat: A

RED COCKBURN RIBEYE 308U
RED SOO LINE POWER EYE 161X
 RED TR LYNN 301R

NBAR HAMLEY S913
3 ACES QUEEN 9099
 WCC QUEEN 771

RED BAR-E-L RIBEYE 103R
 RED WILBAR CORA 443P
 RED GEIS KNIGHT HAWK 14'02
 TR LYNN 105L
 PIE BILLINGS 487
 NBAR KELLY 913
 J BAR 7 GRAND CANYON 2222
 JRA JAMES 3101

HB	GM	CD	BW	WW	YW	MK	HPG	CM	MB	YG	CW	RE
		1	-0.3	64	100	19	8	8	0.21	0.14	29	-0.24

RED SOO LINE POWER EYE
 SIRE OF LOT 68



70

6 EMBRYOS

100% AR – Cat: A

MAJESTIC LIGHTNING 717 SGMR
MAJESTIC LION HEART A25
 MAJESTIC MS. ADVANCER R115

LCOC HIGH NOON A093R
LCOC FIREFLY UA001
 LCOC FIREFLY RA144

WHITSTONE CAYENNE 423R
 WHITSTONE BLOCKANNA R227
 4L SUPER VISION R2292
 MS ADVANCER OF 4L RM30
 BIEBER MAKE MIMI 7249
 SRN HI DEE 3021
 BROWN VACATION H7106
 LCHMN FIREFLY J1118

HB	GM	CD	BW	WW	YW	MK	HPG	CM	MB	YG	CW	RE
		0	0.4	63	101	19	9	4	0.46	0.08	31	0.20

LCOC FIREFLY UA001
 DAM OF LOT 70



69

3 EMBRYOS

100% AR – Cat: A

RED TOWAW INDEED 104H
J6RA BKE INDEED
 RED SIX MILE FAVORITE 890S

NBAR HAMELY S913
WR MS TAMI 1036
 WR MS TAMI 721

RED CC EXPANSION 5E
 RED TOWAW MOLLY 67C
 RED SIX MILE PRICELESS 268P
 RED JAS BELLE 3M
 PIE BILLINGS 487
 NBAR KELLY 913
 LCC CHEYENNE B221L
 HBRA 708

HB	GM	CD	BW	WW	YW	MK	HPG	CM	MB	YG	CW	RE
		0	-1.0	44	59	21	9	6	0.27	0.07	4	-0.36

J6RA BKE INDEED
 SIRE OF LOT 69



71

3 EMBRYOS

100% AR – Cat: A

PIE BILLINGS 487
NBAR HAMLEY S913
 NBAR KELLY 913

WEBR DOC HOLLIDAY 2N
WEBR MS SUE ELLEN 18S
 PRESSER'S DAISY 201

PERKS ADVANCE 121R
 PIE RAMBO'S PRIDE 0289
 NBAR DANCE 531
 NBAR KELLY 700
 MLK CRK CUB 722
 WEBR MS DOLLY 1L
 BJR JR 107
 PRESSER'S DASIS

HB	GM	CD	BW	WW	YW	MK	HPG	CM	MB	YG	CW	RE
		4	-2.2	53	77	26	9	8	0.51	0.07	12	-0.23

NBAR HAMLEY
 SIRE OF LOT 71



SELLING CHOICE ON 71a, 71b & 71c

72a

3 EMBRYOS

100% AR - Cat: A

RED SSS SOLDIER 365W
RED LAZY MC TROOPER 21Y
 LAZY MC EXPRESS 60W

RED FINE LINE MULBERRY 26P
MAJESTIC BLOCKANNA X43
 MAJESTIC BLOCKANNA 728 SGMR

RED SVR KNIGHT 236T
 RED SSS BELLE 342S
 RED RMJ REDMAN 1T
 STEWART EXPRESS 304N
 RED COMPASS MULBERRY 449M
 RED DUS FAYETTE 8G
 PERKS ADVANCER 9088
 MAJESTIC BLOCKANNA 715

HB	GM	CD	BW	WW	YW	MK	HPG	CM	MB	YG	CW	RE
		-1	0.7	69	110	21	10	5	0.28	0.02	36	0.22

RED LAZY MC TROOPER 21Y
 SIRE OF LOT 72A



72b

3 EMBRYOS

100% AR - Cat: A

MESSMER PACKER S008
LSF BOXED BEEF 9063W
 LSF LARKABA 59J R5195

RED FINE LINE MULBERRY 26P
MAJESTIC BLOCKANNA X43
 MAJESTIC BLOCKANNA 728 SGMR

MESSMER JOSHUA 019P
 MESSMER MILLIE 124P
 LCHMN ENTERPRISE 1370H
 CV 6384 LARKABA 59J
 RED COMPASS MULBERRY 449M
 RED DUS FAYETTE 8G
 PERKS ADVANCER 9088
 MAJESTIC BLOCKANNA 715

HB	GM	CD	BW	WW	YW	MK	HPG	CM	MB	YG	CW	RE
		1	0.0	76	121	19	13	7	0.63	0.04	42	0.42

MAJESTIC BLOCKANNA X43
 DAM OF LOTS 72A & 72B



72c

3 EMBRYOS

100% AR - Cat: A

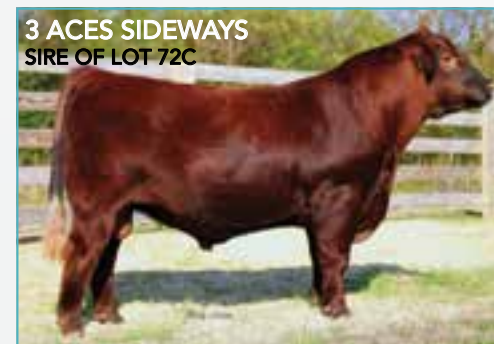
BUF CRK HOBO 1961
3 ACES SIDWAYS
 TROWBRIDGE LANA 707

LCC GLANCE B062M
WHITESTONE BLOCKANNA X234
 FEDDES BLOCKANNA 807

BUF CRK HOBO 1413
 BUF CR CARRIE VC1174
 J BAR 7 GRAND CANYON 2222
 LANA GAL N78
 BECTON LANCER F442T
 LCC ROCKETTE K1105
 LMN IMPRESSIVE ROB1095B
 FED'S BLOCKANA 692

HB	GM	CD	BW	WW	YW	MK	HPG	CM	MB	YG	CW	RE
		1	1.1	62	93	16	10	6	0.17	0.10	26	-0.17

3 ACES SIDWAYS
 SIRE OF LOT 72C



73

3 EMBRYOS

PB SM

MR NLC UPGRADE U8676
MR TR HAMMER 308A ET
 SVF/HS EXPECTING A DREAM

CKS RE-HAB
WF FOREVER LADY Z165
 WF U165

ELLINGSON LEGACY M229
 MS NLC MOJO S6119 B
 CNS DREAM ON L186
 SVF/NJC EXPECTATION N206
 CNS DREAM ON L186
 SS SWEET PEA
 ACC1 HUSTLER 2N
 VBCC MOLLY M10

CE	BW	WW	YW	Milk	Doc	CW	YG	Marb	BF	RE	API	TI
10	2.3	71	100	17	12	32	-0.37	0.29	-0.08	0.85	130	76

74

3 EMBRYOS

1/2 SM 1/2 AR

SVF STEEL FORCE S701
MR HOC BROKER
 JM BF H25

MAJESTIC LIGHTNING 717 SGMR
4L MS LIGHTNING 143
 MS 1925 AMBUSH OF 4L 93U

CNS DREAM ON L186
 SVF SHEZA BEAUTY L901
 G&L BLACKFOOT 716D
 YK MISS BIK B80
 WHITESTONE CAYENNE 423R
 WHITE STONE BLOCKANNA R227
 4L HERE'S YOUR SIGN 192S
 4L MS CONNIE 70 S

CE	BW	WW	YW	Milk	Doc	CW	YG	Marb	BF	RE	API	TI
3	3.7	73	108	15	7	39	-0.11	0.01	-0.05	0.32	77	61

MR HOC BROKER
 SIRE OF LOT 74





KKSeedstock Consultants
Specialized Sales
2300 Monument Ave.
Richmond, VA 23220

**First Class
Presorted
US Postage Paid
Fort Worth, Texas
Permit #711**